

0488L Panic Bar Inside Release and Latch Assembly (UL 305 Certified)

Part Number: 10488L*

CAUTION

Before installation begins: This Panic Bar ISR is only intended to be used on doors that have sufficient structural support, either a steel backing plate or other method appropriate for properly securing 1/4" stainless steel bolts/screws (not included).

DIRECTIONS

1. With door placed on work table, set Bracket 1 in position to align ISR rod hole with the same hole on outside latch ([REF IS-0778](#)). Align bracket so that it is square on the door. Mark and center punch (6) holes.
2. Using a t-square, find centers of holes shown and mark horizontal centerlines for Bracket 2.
3. Place Bracket 2 on door, align mounting holes with drawn centerline, square with edge of door at distance shown, mark centers of slots and center punch (4) holes.
4. Drill a 3/4" diameter (19.1 mm) hole through door. Hole must be square to door surface for proper alignment and operation. At this time, drill holes size appropriate for self-threading structural 1/4-20 screws or 1/4-20 type bolts.
5. Install Bracket 1 and 2 with 1/4-20 structural hardware (not included).
6. Install pivot arm assembly and push rod on Brackets 1 and 2.
7. Secure pivot arm assembly with hardware provided, test function, use instruction sheet [IS-0778](#) to complete installation.

NOTE

- UL certified for doors up to 4' x 7'



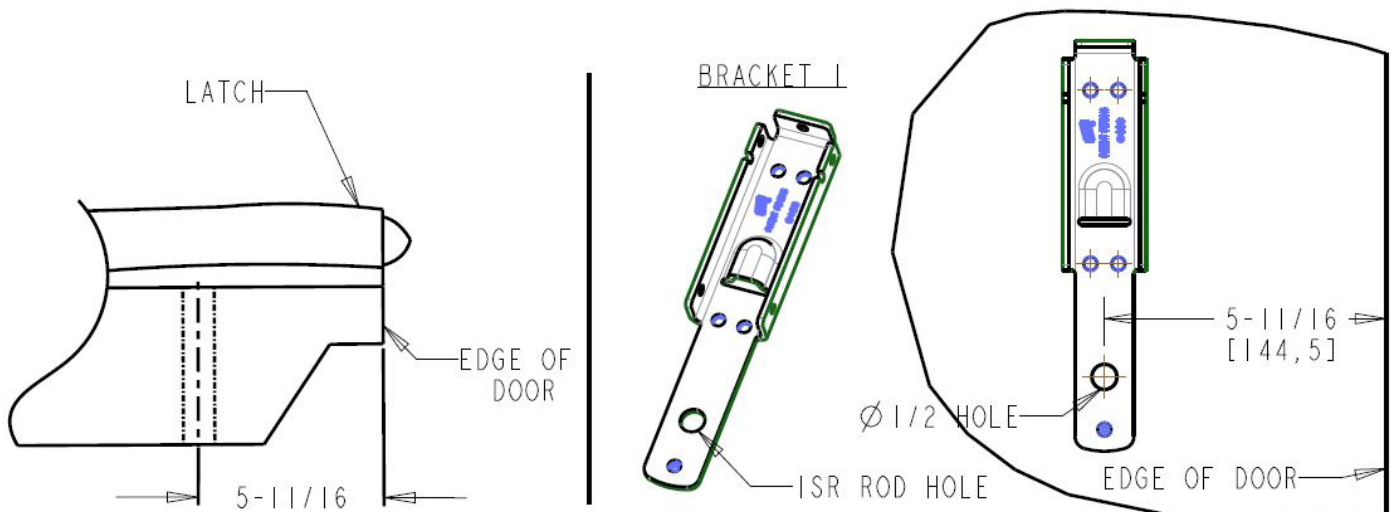
U.S. Patent No. 11,193,311



Visit kasonind.com for information on the [0778](#) latch and [0779](#) strike options



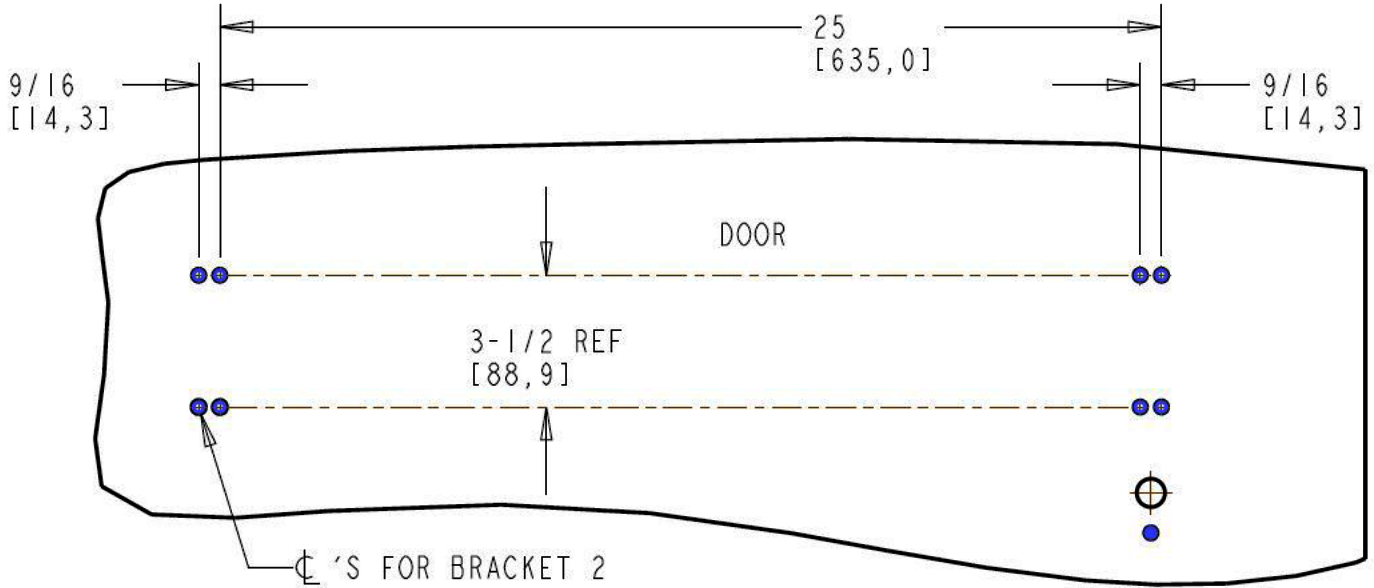
Step 1



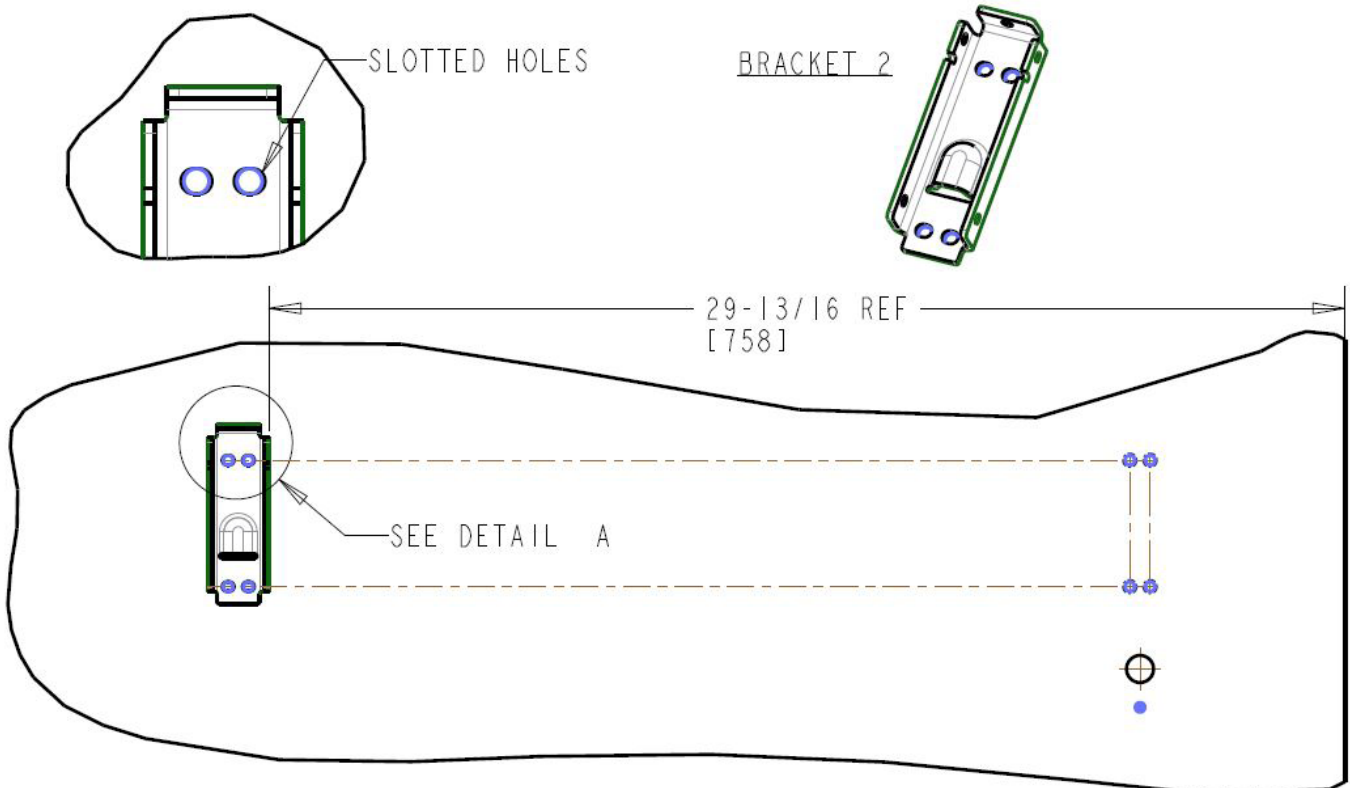
0488L Panic Bar Inside Release and Latch Assembly (UL 305 Certified)

Part Number: 10488L*

Step 2



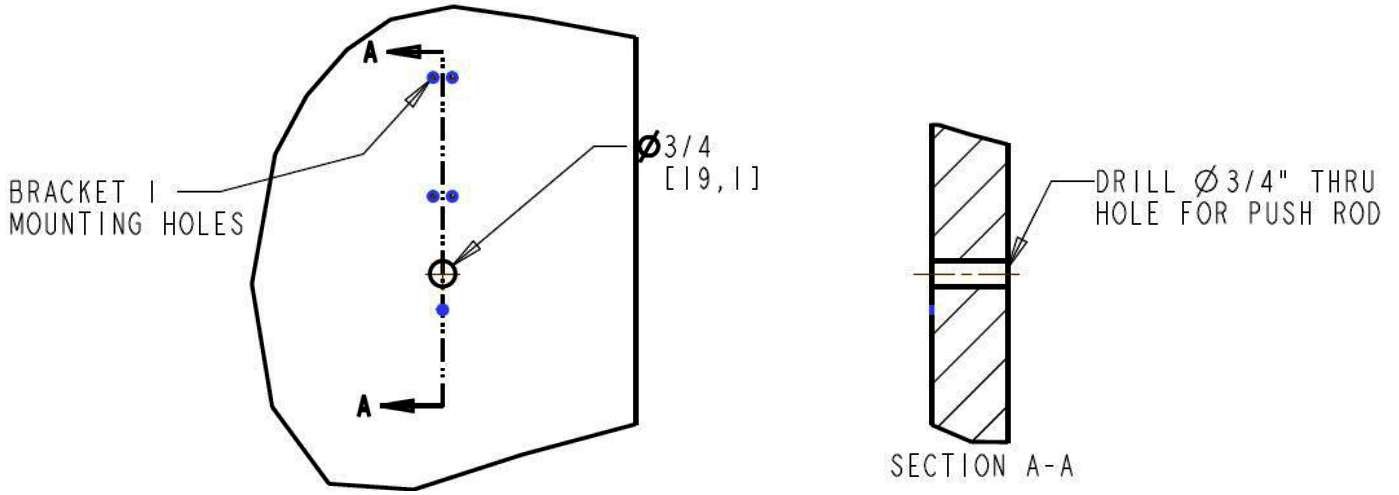
Step 3



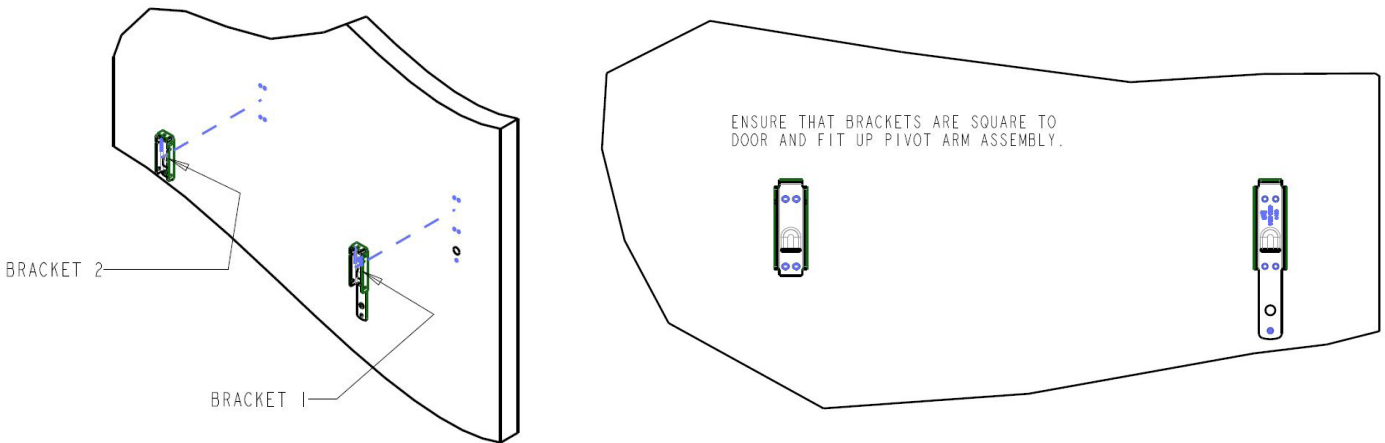
0488L Panic Bar Inside Release and Latch Assembly (UL 305 Certified)

Part Number: 10488L*

Step 4



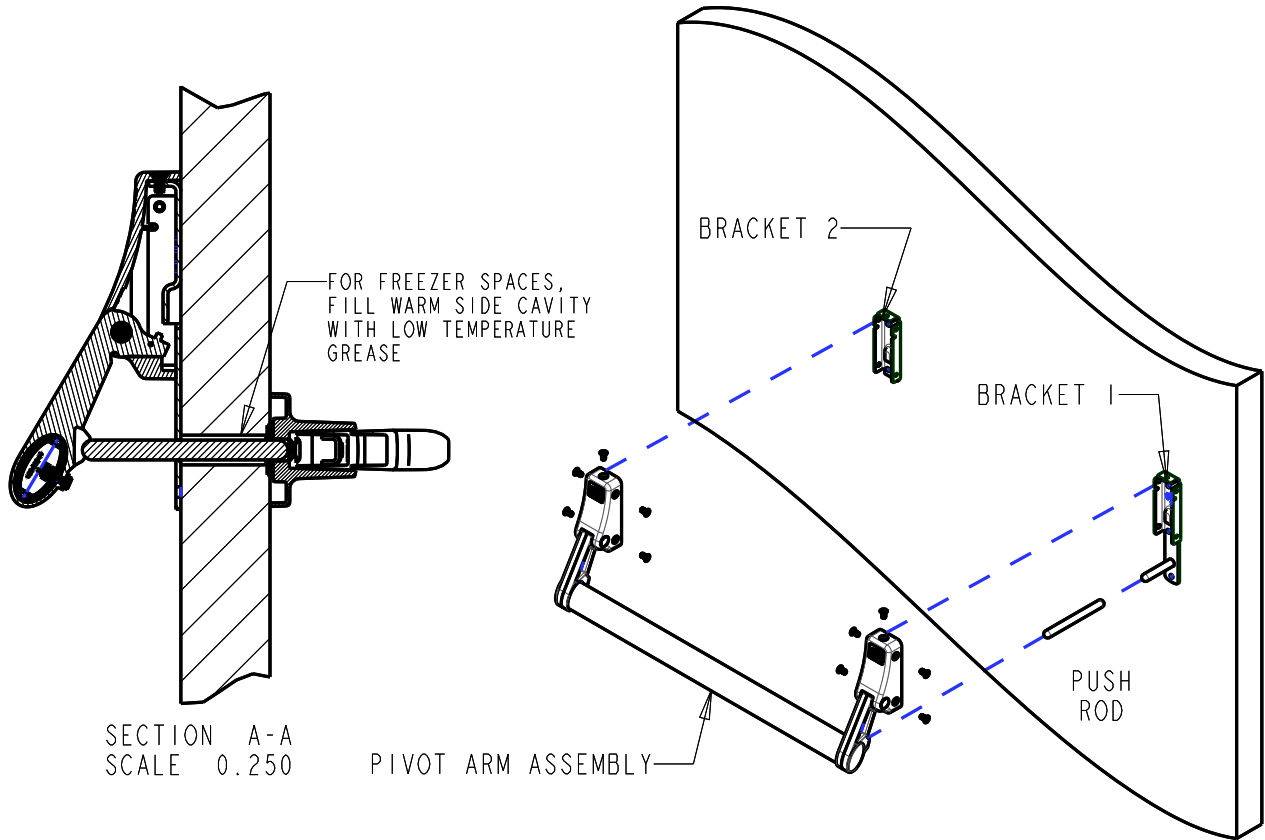
Step 5



0488L Panic Bar Inside Release and Latch Assembly (UL 305 Certified)

Part Number: 10488L*

Step 6



Step 7

