

INDUSTRIAL SECURITY LATCHES

KASON®

It's Better with Kason.

0057

SecureGuard™ Locking
Latch with Keyed or Keyless
Inside Release



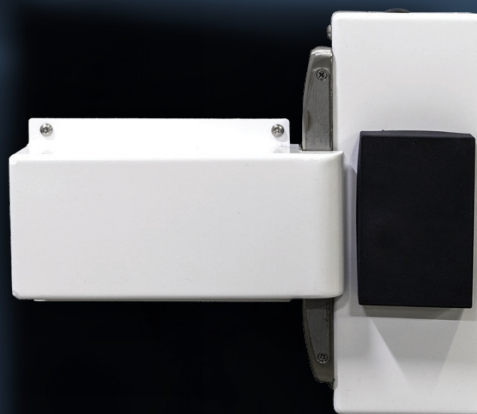
0057E

SecureGuard™ Security Latch
with Electronic Flush Strike



0058E

SafeGuard® Security Latch
with Electronic Flush Strike



Kason® 0057 SecureGuard™ Locking Latch with Keyed or Keyless Inside Release

- Locks automatically when door is closed
- Can be locked open for easier access during high-traffic times
- Retrofits easily on most walk-in doors
- Offers freeze-resistant internal components
- Uses quality high-security brass pin-type lock cylinder
- Available in rim cylinder and removable core cylinder lock models
- Optional: Keyless inside release bypass knob for quick, key-free lock override



Optional: Keyless Inside Release Bypass Knob



Kason® 0057E SecureGuard™ Security Latch with Electronic Flush Strike

- Kason SecureGuard latch with inside release always assures easy exit
- Durable low-maintenance stainless steel hardware and powder coated steel construction
- Utilizes high-security industry standard UL Certified electronic strike latch
- Optional: Keyless inside release bypass knob for quick, key-free lock override
- Strike located inside room for increased tamper resistance
- Strike can be set to fail secure during a power outage, a mechanical key override is included to open door in such an event if access is required
- Accepts card readers intended for standard junction box mounting



Interior View



Exterior View

Kason® 0058E SafeGuard® Security Latch with Electronic Flush Strike

- Kason SafeGuard latch with inside release (sold separately) assures easy exit at all times
- Stainless steel and powder coated steel construction with stainless steel hardware provide durability and low maintenance
- Utilizes high-security industry standard UL Certified electronic strike
- Accepts card readers intended for standard junction box mounting
- Requires use with Kason inside release models: 0481C, 0482C, 0486C, 0487C, 0488C, and 0489C



Exterior View



Interior View

Kason® 0057 SecureGuard™ Locking Latch with Keyed or Keyless Inside Release



Part No.	Item	Qty./Carton	Wgt./Carton
10057000004	Security Latch with Rim Cylinder Misc Key, Key Bypass	1	12 lb (5.4 kg)
10057000008	Security Latch with SFIC 7-pin Rem Core Cylinder, Key Bypass	1	12 lb (5.4 kg)
10057000017	Thru Bolt Strike, Flush to 1-1/4" [0 to 31,6 mm] Offset	1	2 lb (0.9 kg)
10057000022	Removable Core Cylinder Kit	1	1 lb (0.5 kg)
10057000026	Thick Door Extension Kit	1	1 lb (0.5 kg)
10057K00004	Security Latch with Rim Cylinder Misc Key, QR Knob	1	12 lb (5.4 kg)
10057K00008	Security Latch with SFIC 7-pin Rem Core Cylinder, QR Knob	1	12 lb (5.4 kg)
9005700242	Replacement Kit for 0057-04 Cylinder Kit	1	0.36 lb (0.16 kg)
9005700275	Replacement Removable Core Cylinder Key #B1	1	0.6 lb (0.27 kg)



Kason® 0057E SecureGuard™ Security Latch with Electronic Flush Strike

Part No.	Description	Qty./Carton	Wgt./Carton
10057E00008	Latch with Electronic Strike, Flush, SFIC 7-pin Ren Core Cylinder	1	16.4 lb (7.4 kg)
10057EK0008	Latch with Electronic Strike, Flush, SFIC 7-pin Ren Core Cylinder, Quick Release Knob	1	16.6 lb (7.5 kg)
90057E00250	E-strike Assembly	1	6.5 lb (2.9 kg)
90058E00220	HID Card Reader 920NTNNEK0, Model R40E (Sold Separately)	1	0.54 lb (0.24 kg)



Kason® 0058E SafeGuard® Security Latch with Electronic Flush Strike

Part No.	Description	Qty./Carton	Wgt./Carton
10058E00000	Latch with Electronic Strike, Flush, Standard Card Reader	1	7 lb (3.2 kg)
10058E01000	Latch with Electronic Strike, Flush, Bluetooth Card Reader	1	7 lb (3.2 kg)
10058E03000	Latch with Electronic Strike, Flush, No Card Reader, Stainless Steel	1	6.4 lb (2.9 kg)
10058E03000W	Latch with Electronic Strike, Flush, No Card Reader, White	1	6.4 lb (2.9 kg)
10058ER2000	Latch with Electronic Strike, Retrofit Flush, No Card Reader, Stainless Steel	1	6.5 lb (3 kg)
10058ER2000W	Latch with Electronic Strike, Retrofit Flush, No Card Reader, White	1	6.5 lb (3 kg)

0058E Compatible Inside Release Models



0488C



0481C



0482C



0487C



0486C



0489C