

0057E SecureGuard™ Security Latch with Electronic Flush Strike

Part Number: 10057E*

FEATURES

- Kason SecureGuard latch with inside release always assures easy exit
- Durable, low-maintenance stainless steel hardware and powder coated steel construction
- Utilizes high-security industry standard UL Certified electronic strike latch
- Strike located inside room for increased tamper resistance
- Strike can be set to fail secure during a power outage, a mechanical key override is included to open door in such an event if access is required
- Accepts card readers intended for standard junction box mounting

MATERIALS

- **Base Plate:** Steel
- **Top Cover:** Optional 300 series stainless steel or powder coated steel
- **Strike Spacer:** Gray ABS
- **Mounting Plates:** Anodized aluminum
- **Latch Body Cover:** Stainless Steel
- **Latch Tongue:** Zamak #3
- **Pull Handle:** Zamak #3, polished chrome plated
- **Push Handle:** Stainless steel
- **Couplings:** Plastic
- **Hardware:** Stainless steel
- **Electric Strike Assa Abloy 9600:** Stainless steel
- **Card Reader† HID:** See table for model number

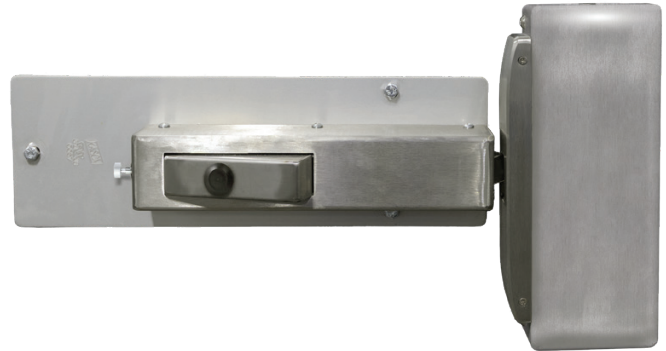
ELECTRICAL

- **Required Power for Card Reader:**
65 mA @ 16 VDC, 5-16 VDC operating voltage
- **Electric Strike Power Required:**
0.45/0.25 A @ 12/24 VDC at continuous duty

DESIGN CRITERIA

- Electric strike can be set to either Fail Safe or Fail Secure
- Physical key override allows entry with power off and fail secure setting
- **Temperature Range:** -20°F to 120°F (-29°C to 49°C)
- **Mounting Hardware:** Designed for (4) 1/4" dia. fasteners and 1/4 strike hardware (included)
- **Warning:** Only connect low voltage 12-24 V wiring connections inside strike housing. To ensure safe installation follow instructions enclosed within product shipping carton.

Interior View



Exterior View



Accepts user specified card reader

Part No.*	Description	Wgt./Carton
10057E00008	Latch with Electronic Strike, Flush, SFIC 7-pin Removeable Core Cylinder	16.4 lb (7.4 kg)
10057EK0008	Latch with Electronic Strike, Flush, SFIC 7-pin Removeable Core Cylinder, Quick Release Knob	16.6 lb (7.5 kg)
90057E00250	E-strike Assembly	6.5 lb (2.9 kg)
90058E00220†	HID Card Reader 920NTNNEK0, Model R40E	0.54 lb (0.24 kg)

† Sold separately

0057E SecureGuard™ Security Latch with Electronic Flush Strike

Part Number: 10057E*

