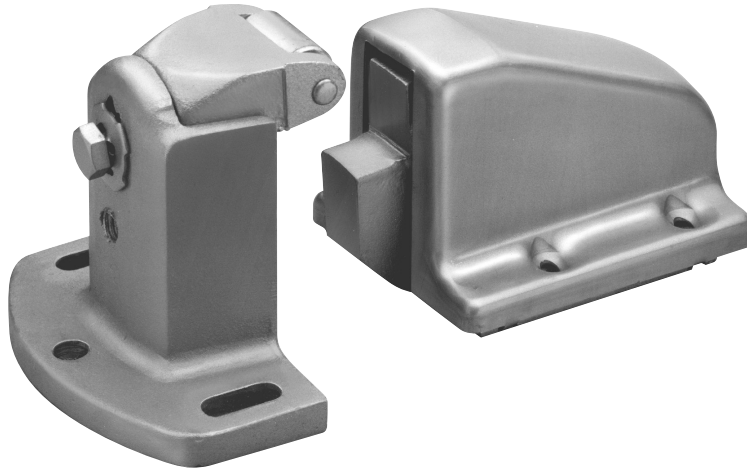


KASON EXPLOSION VENTING LATCHES



EXPLOSION VENTING LATCHES

- Rugged explosion venting single latches
- Tested, approved and rated by Factory Mutual Laboratories

188X LATCH

SPECIFICATIONS

MATERIAL:
Steel body; aluminum cover and strike

MOUNTING HOLES:
Latch drilled and countersunk for 1/4" (6.0mm) screws

PACKAGING:
1 per carton

FINISH:
Kasonized (Zinc plated)

FM TEST RATING:
Releases at a force of 38 lb. (169 N).
For larger doors use two or more latches

WEIGHT:
Approx. 4.1 lb. (1.87kg) per carton

189X LATCH

SPECIFICATIONS

FM TEST RATING:
Releases at a force of 96 lb. (427 N).
For larger doors use two or more latches.

All other specifications same as 188X.

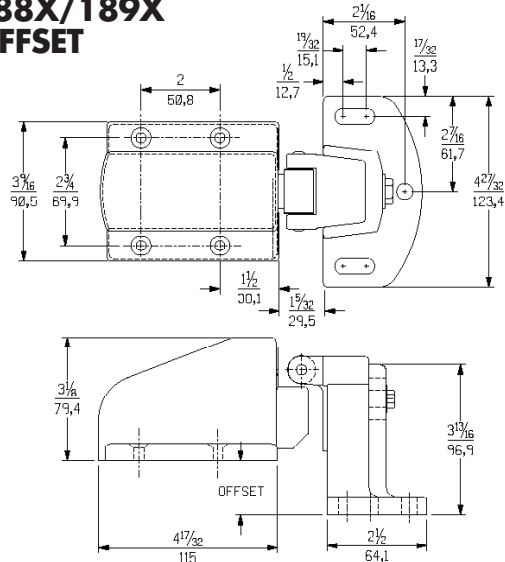
Model No.	Item	Offset
10188X00004	Explosion Venting Latch	-1/8" to 1/4" (-3.2 to 6.4 mm)
10188X00008	Explosion Venting Latch	3/4" to 1-3/8" (19.0 to 34.9 mm)
10189X00004	Explosion Venting Latch	-1/8" to 1/4" (-3.2 to 6.4 mm)
10189X00008	Explosion Venting Latch	3/4" to 1-3/8" (19.0 to 34.9 mm)

WARNING: Explosion venting latches are intended to release at designated pressures to protect the enclosures on which they are mounted. Users must determine safe pressure levels for their applications. Because installations and environmental conditions vary, regular maintenance and latch function checks are necessary to assure proper operation.

ITEM # 188X/189X



188X/189X OFFSET



188X/189X FLUSH

