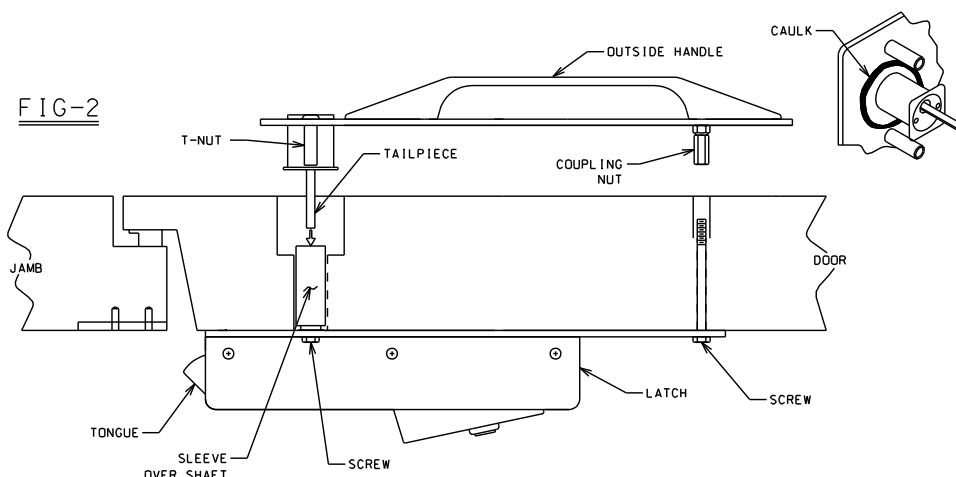
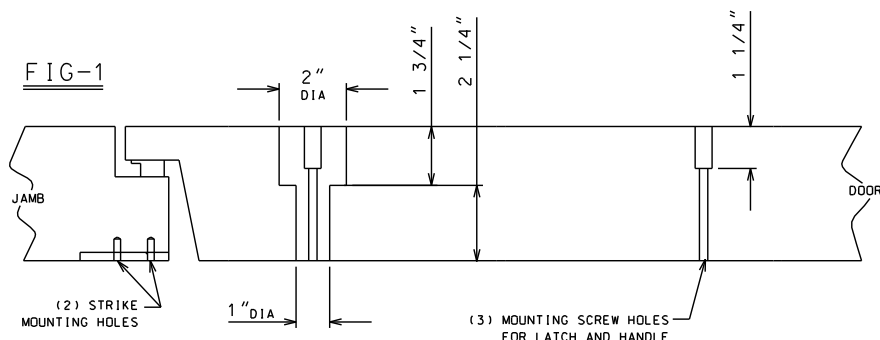


0057 SecureGuard™ Locking Latch with Keyed or Keyless Inside Release

Part Number: 10057*



PRE-ASSEMBLY NOTES

1. All mounting hardware is included for inside latch and outside handle.
2. Installer must supply strike mounting hardware. (2) 1/4" diameter fasteners.
3. A metal tapping plate is recommended inside jamb panel for securing strike.
4. An optional through-bolt mounted strike is available for field installations. (Kason part number 10057000017)
5. Rotate the templates 180° when installing the latch in a door that opens in opposite direction from shown.
6. For door less than 3-7/8" thick, trim parts (see Fig. 3), to prevent binding of locking mechanism. Not recommended for door less than 3-1/2" thick.

MARK AND DRILL HOLES (FIG. 1/TEMPLATES)

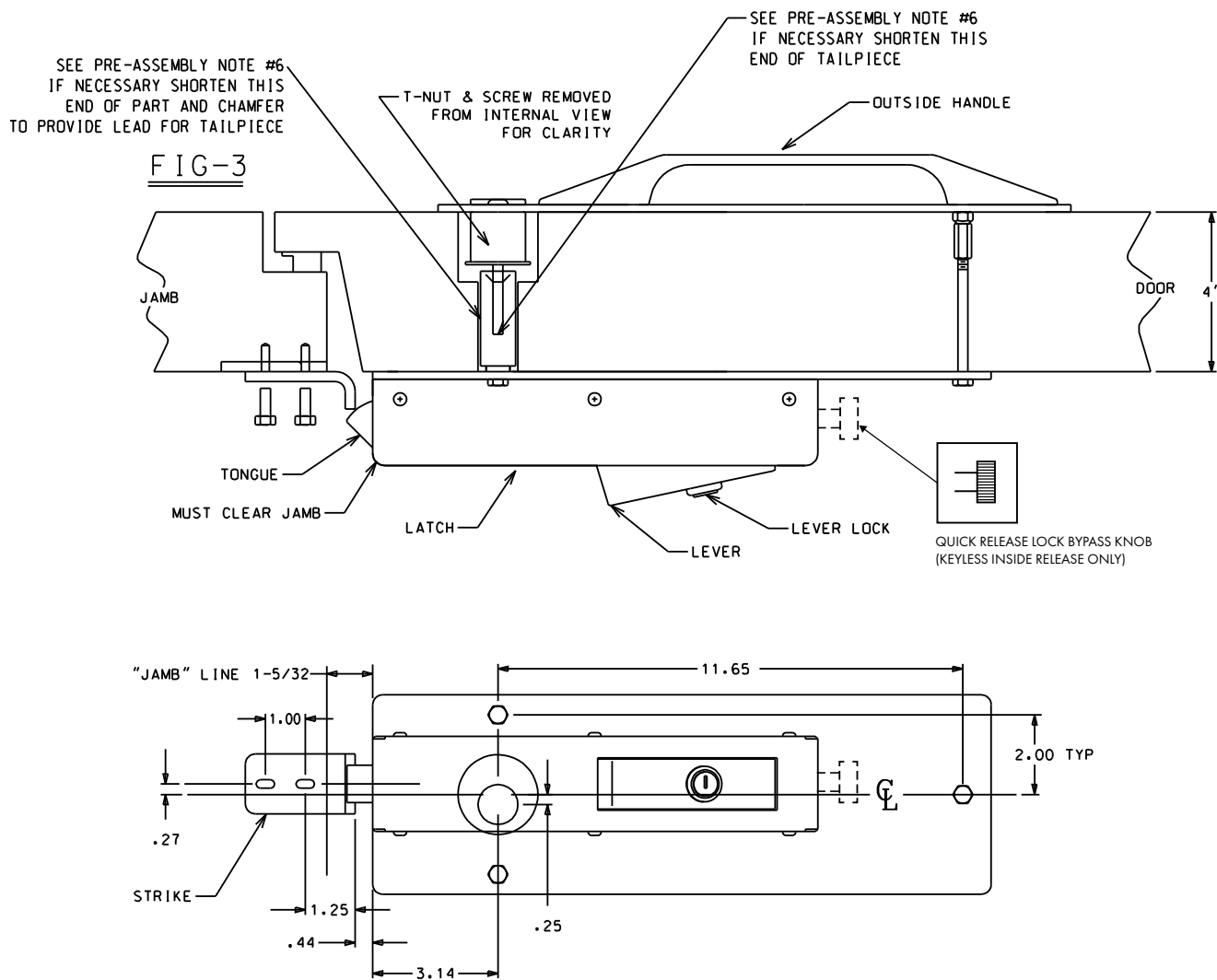
1. Use templates to mark positions and drill all holes. Start with (1) inside. Then use the (2) strike template and (3) outside handle template.
Note: Templates 1 and 3 are packaged separately with latch.
2. Follow instructions on templates. Drill through-holes from inside as straight as possible because outside template position is aligned with the holes.
3. Fig. 1 shows appearance of holes prior to installing the hardware.

MOUNT LATCH AND OUTSIDE HANDLE TO DOOR (FIG. 2)

1. Caulk back of outside handle plate around the perimeter of the cylinder to seal against the door.
2. With sleeve/shaft inserted through 1" diameter hole in insulation, locate the latch on inside of door.
3. Insert (3) screws through mounting holes as shown. Hold latch in place while attaching outside handle.
4. Position outside handle, as shown, while inserting tailpiece into sleeve. Rotate handle-plate, slightly if necessary, align tailpiece with flat edge.
5. With tailpiece inserted in shaft, align the t-nuts and coupling nut with mounting holes and fully insert the assembly until plate is flush with door surface.
6. Engage the (3) mounting screws with the handle nuts and tighten. Use the extra washers provided if screws bottom out inside nuts before they are secure.

0057 SecureGuard™ Locking Latch with Keyed or Keyless Inside Release

Part Number: 10057*



TEST LATCH FUNCTION

1. Turning key in cylinder on outside of door should rotate tongue into latch with about 1/4 turn of the key.
2. Pushing inside lever should operate tongue and allow door to open.
3. Tongue and tip of latch cover should clear jamb when opening door.

MOUNT STRIKE

1. Mount strike at holes drilled with template. Use 1/4" fasteners (not included).
2. Use strike slots to adjust strike position relative to tongue for desired fit.

GENERAL NOTES

1. Fig. 3 shows the installed latch, handle and strike, along with mounting reference dimensions.
2. Latch automatically locks upon closing door and must be unlocked with key from outside to open.
3. From inside, push lever to open door. The inside lever always overrides outside lock.
4. To temporarily deactivate the outside lock:
 - **Keyed Option:** push and hold lever in and operate lever lock with key to lock down lever
 - **Knob Option:** push and hold lever in and press knob in to lock down lever
 - Either option will hold tongue in the retracted position, unlocking the latch

