

0055 SafeGuard® Latch

Part Number: 10055*


Part No.*	Description	Finish
10055000020	Latch, Flush to 3/16" (0 to 4.8 mm)	Chrome/SS
10055000024	Latch, 3/4" to 1-1/8" (19 to 28.6 mm)	Chrome/SS
10055000028	Latch, 1-1/8" to 1-5/8" (28.6 to 41.3 mm)	Chrome/SS
10055000032	Latch, 1-3/8" to 1-7/8" (34.9 to 47.6 mm)	Chrome/SS
10055000065	Latch, Flush to 3/16" (0 to 4.8 mm)	Silver P.C./SS
10055000066	Latch, 3/4" to 1-1/8" (19 to 28.6 mm)	Silver P.C./SS
10055000068	Latch, 1-1/8" to 1-5/8" (28.6 to 41.3 mm)	Silver P.C./SS
No. 0055 latches and strikes may be ordered separately. Powder Coat finishes available. Request Information.		
15582000004	Latch, 1-1/8" to 1-5/8" (28.6 to 41.3 mm)	Chrome/SS






CAUTION




**DO NOT LOCK THE LATCH BEFORE CLOSING.
THE DOOR LATCH COULD BECOME DAMAGED.**


WARNING

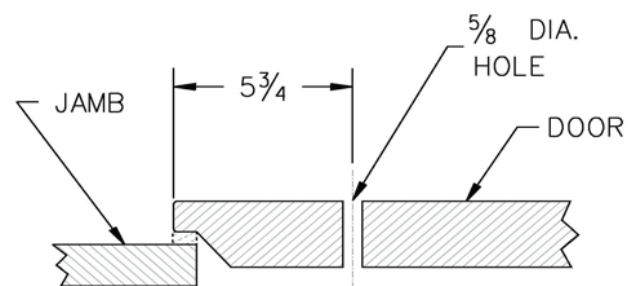
ENTRAPMENT AND FREEZE HAZARD

Failure to follow the installation and testing procedures may result in personnel being entrapped and subject to extreme cold, freezing temperature and possibly death. See page 3 for testing procedures.

Special model 0055XXL uses model 0486D or 0489D inside release. See inside release instructions for more details.

1. Drill Hole for Plunger Rod of Inside Release Handle

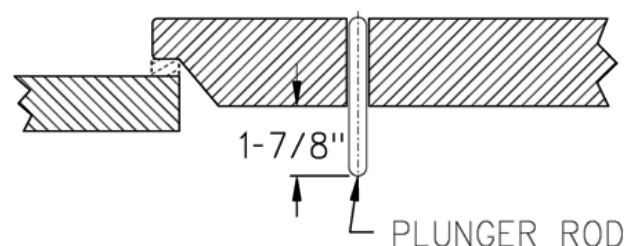
Drill a 5/8" (15.87 mm) hole, 5-3/4" (136.05 mm) center distance from edge of door as shown in illustration.



2. Insert Plunger Rod

NOTE: A standard 7-7/8" (200 mm) plunger rod is furnished with each 0055 latch. If your door is less than 6" (152.4 mm) thick, cut rod and round the end so that it measures 1-7/8" (47.6 mm) more than the thickness of your door.

- If rod is cut to fit, round the end to similar shape as opposite end
- Plunger rods for thicker doors are available by contacting Kason customer support



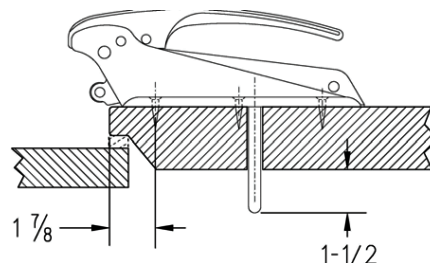
0055 SafeGuard® Latch

Part Number: 10055*

3. Fasten Latch to Door

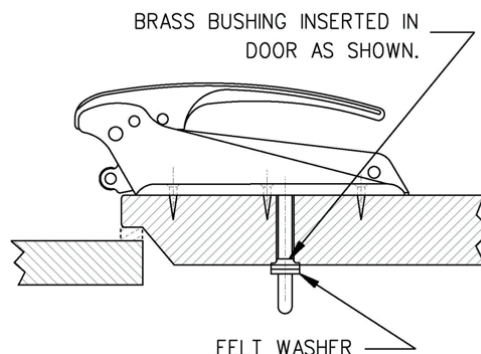
(Six No. 14 (6 mm) screws are required.)

IMPORTANT! The front screw-hole must be located on a 1-7/8" (47.63 mm) center from edge of door as shown in illustration. The plunger rod (when in contact with the latch) should extend 1-11/16" (42.86 mm) beyond door as shown in illustration.



4. Insert Brass Bushing and Felt Washer

Slip the brass bushing onto the plunger rod. Push the bushing flush with the door (as shown in the illustration). Slip the felt washer onto the plunger rod, flush against the brass bushing.



5. Attach Inside Release Handle

(Three No. 12 (5.5 mm) screws are required)

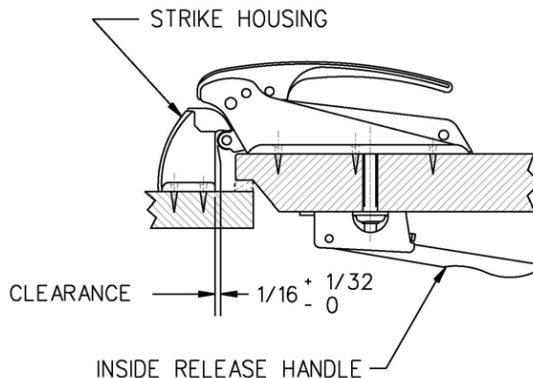
NOTE: The inside release handle can be mounted for use in a horizontal, up or down position.

IMPORTANT! Plunger rod must move freely with release handle.

6. Attach Strike

(Four No. 14 (6 mm) screws are required)

IMPORTANT! A minimum clearance of 1/16" (1.59 mm) from edge of strike housing to edge of roller is needed to ensure perfect action.



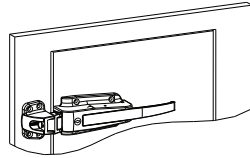
0055 SafeGuard® Latch

Part Number: 10055 *

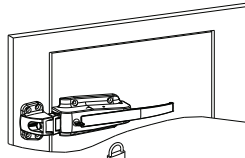
CAUTION



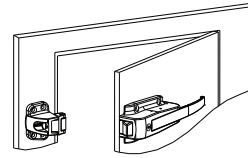
**DO NOT LOCK THE LATCH BEFORE CLOSING.
THE DOOR LATCH COULD BECOME DAMAGED.**



1. Close Door



2. Lock Latch



3. Unlock Latch

4. Open Door

5. Leave the Latch Unlocked

WARNING

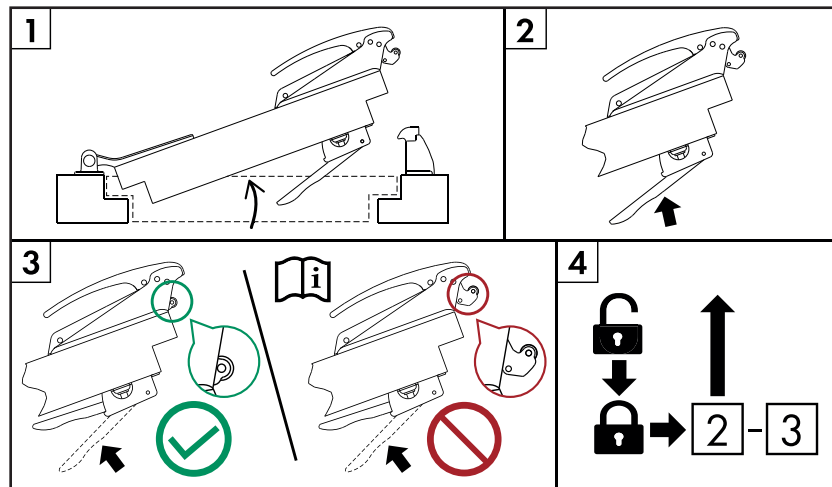


ENTRAPMENT AND FREEZE HAZARD

Failure to follow the installation and testing procedures may result in personnel being entrapped and subject to extreme cold, freezing temperatures, and possibly death.

Affix the safety decal, that came with the latch, to the door near the latch or the inside release.

The door hardware includes a SafeGuard® latch, which is designed with an inside release that will operate the latch to open the door from the inside, when the latch has been locked on the outside. Extreme or harsh use conditions of the latch, inside release or walk-in door, may damage or impair function of the latch. For this reason, it is important to inspect and test the function of the latch and inside release daily before entering the walk-in. Should the latch or inside release fail to release the latch and allow door to open from the inside, do not enter the walk-in and report the problem to management so that the door, latch or inside release may be serviced by a professional.



TESTING PROCEDURE

1. Open the door.
2. With the door open, push to depress the inside release knob (or push bar).
3. (A) If the latch tongue retracts substantially into the latch with the release knob depressed, the latch and inside release are functioning properly.
4. (B) If the latch tongue does not retract substantially into the latch, do not enter the walk-in, and notify management to have the door serviced.
5. Lock the door using key cylinder and/or padlock and repeat steps 2 and 3.
Note: After passing the step 4 test with latch locked, unlock the latch and continue with normal use of the door.