

0057 SecureGuard™ e-Lock High Security Latch (Indoor Use Only)

Part Number: 0057-306/0057-307

! WARNING		Entrapment and Freeze Hazards
<p>Failure to follow the installation and testing procedures may result in personnel being entrapped and subject to extreme cold, freezing temperature and possibly death. See page 9 for safety testing procedure.</p>		



Powered by 2-AAA batteries (included), this e-Lock operates using a 4 to 8 digit code. Operation is simple: type a valid code and press ENTER. Then turn the lever to the locked or unlocked position.

e-Lock offers:

- Programmable user and supervisor codes
- Programmable modes of operation
- Programmable reset features

Each e-Lock latch contains a green sticker needed for resetting this e-Lock. In the event the e-Lock needs to be reset, the green sticker should be saved in a safe and secure location for future reference. (See page 6 for reset instructions.)

This e-Lock is intended for interior use only.

OPERATING TEMPERATURE

50°F -120°F (10°C - 48°C)

Note: It is strongly recommended that batteries be replaced on an annual basis. In the event the batteries should die, they can be replaced via the external battery compartment.

CARE AND CLEANING

To clean the e-Lock surface, apply non-acid based cleaner to a clean cotton cloth; do not spray cleaner directly on the e-Lock. Wipe down keypad and its respective housing surfaces of excess cleaner.

0057 SecureGuard™ e-Lock High Security Latch (Indoor Use Only)

Part Number: 0057-306/0057-307

LATCH INSTALLATION INSTRUCTIONS

- All mounting hardware for inside latch and outside handle is included
- Installer must supply strike mounting hardware, (2) 1/4" dia. fasteners
- A metal tapping plate is recommended inside jamb panel for securing strike
- An optional through-bolt mounted strike is available for field installations. Order number 10057000017
- When installing the latch in a door that opens in the opposite direction from shown, rotate the template 180°
- For doors less than 3-7/8" thick, trim parts as seen in fig. 3 to prevent binding of locking mechanism. Not recommended for doors less than 3-1/2" thick

1. Mark and drill holes (Templates and Fig. 1)

- Use the full size template included at the end of the instructions booklet to mark positions and drill all holes. Start with (1) inside latch

Note: Template illustrations may vary visually from product being installed, but does not affect installation.

- Follow instructions on templates. Drill through-holes from inside as straight as possible because outside plate position is aligned with these holes
- Fig. 1 shows appearance of holes prior to installing the hardware

2. Mount latch and outside handle to door (Fig. 2)

- Caulk back of outside handle plate around the perimeter of the cylinder to seal against door
- Locate latch on inside of door, with shaft inserted through 1" dia. hole in insulation
- Insert (3) bolts through mounting holes as shown. Hold latch in place while attaching outside handle
- Insert adapter into shaft by aligning flat with the pin in the shaft (see Detail A). Position outside handle as shown while rotating handle plate slightly if necessary
- With adapter inserted in shaft, align the T-nuts and coupling nut with mounting holes and fully insert the assembly until plate is flush with door surface
- Engage the (3) mounting bolts with the handle nuts and tighten. Use the extra washers provided if screws bottom out inside nuts before tightening

FIG. 1

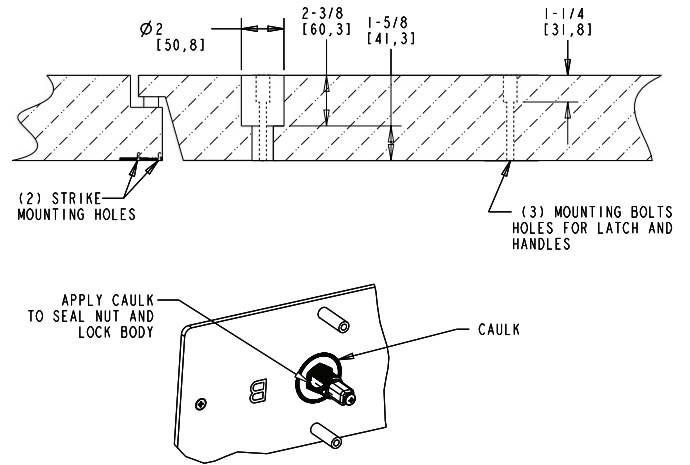
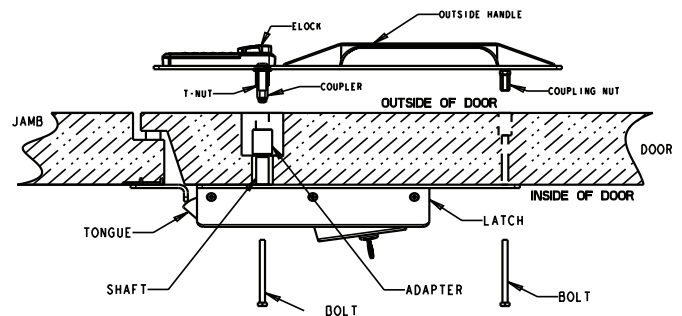
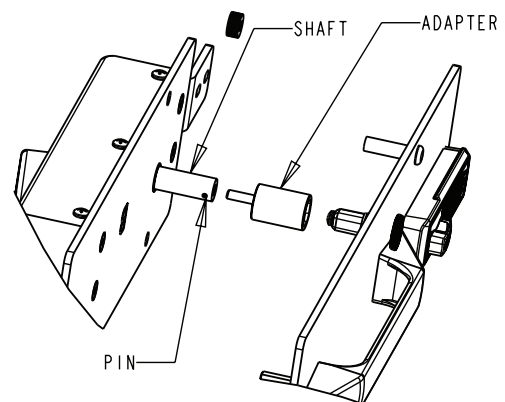


FIG. 2



DETAIL A



0057 SecureGuard™ e-Lock High Security Latch (Indoor Use Only)

Part Number: 0057-306/0057-307

TEST LATCH FUNCTION

1. Turning key in cylinder on outside of door should rotate tongue into latch with about 1/4 turn of the key
2. Pushing inside lever should operate tongue and allow door to open
3. Tongue and tip of latch cover should clear jamb when opening door
4. Affix warning and testing decals as shown in Fig. 3

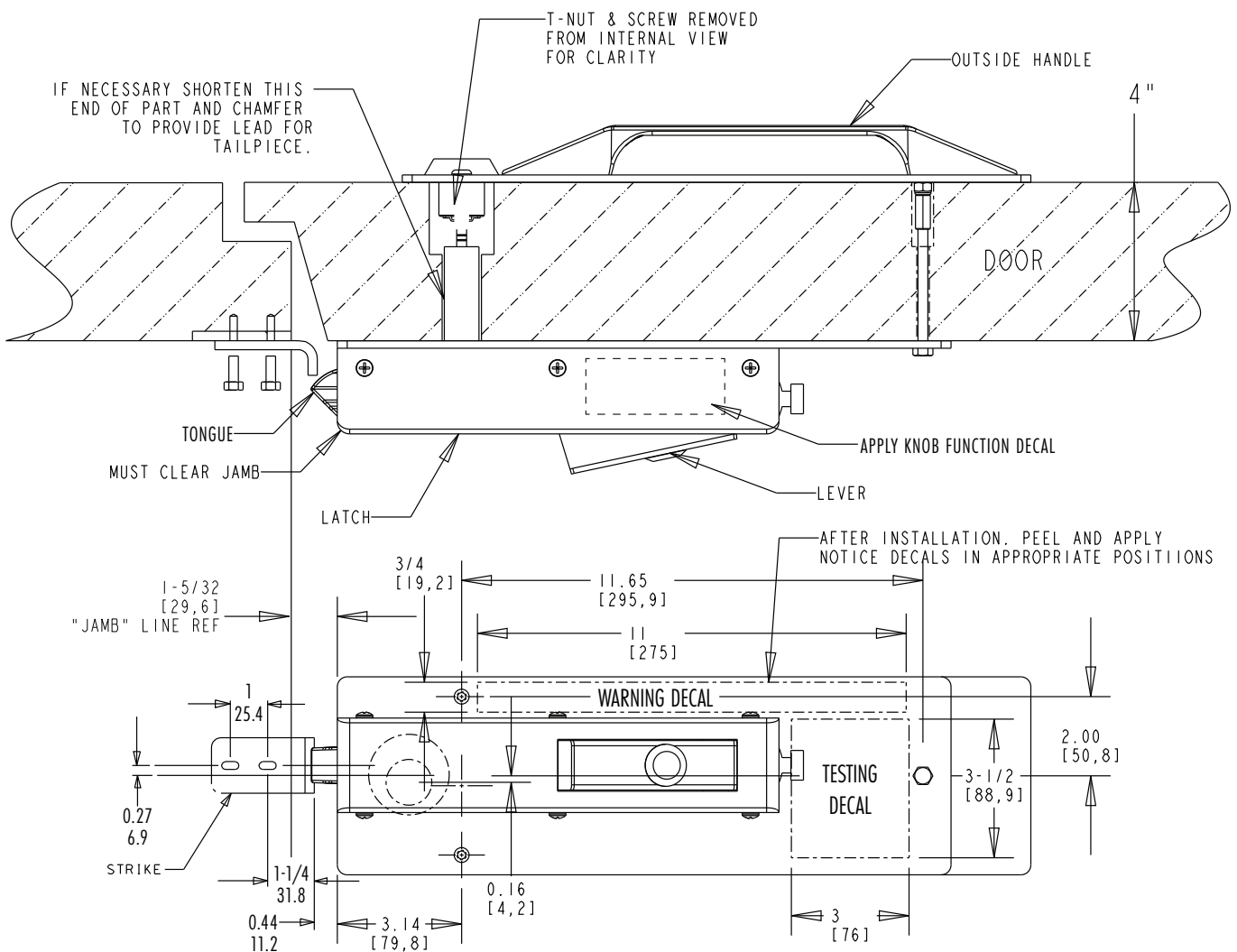
MOUNT STRIKE

1. Drill holes for mounting strike per the template on page 4 (Use plus nuts included if tapping)
2. Either tap for 1/4-20 fasteners directly, or drill for and attach plus nuts if a tapping plate is not used (10488CR0024 rivet nut hand tool required, but not included)
3. See page 5 for finalizing strike assembly on jamb

Notes:

- Fig. 3 shows the installed latch and handle along with mount reference dimensions
- Latch automatically locks upon closing door and must be unlocked with key from outside to open
- From inside, push lever to open door. The inside lever always overrides outside lock

FIG. 3



0057 SecureGuard™ e-Lock High Security Latch (Indoor Use Only)

Part Number: 0057-306/0057-307

OPTIONAL QUICK RELEASE LATCH BYPASS FUNCTION

1. Turn knob as shown in Fig. 4. Push down lever. Tongue should be retracted into housing
2. To reset into lock position as shown in Fig. 5, pull knob out and rotate. Lever will be released and tongue will be extended

FIG. 4

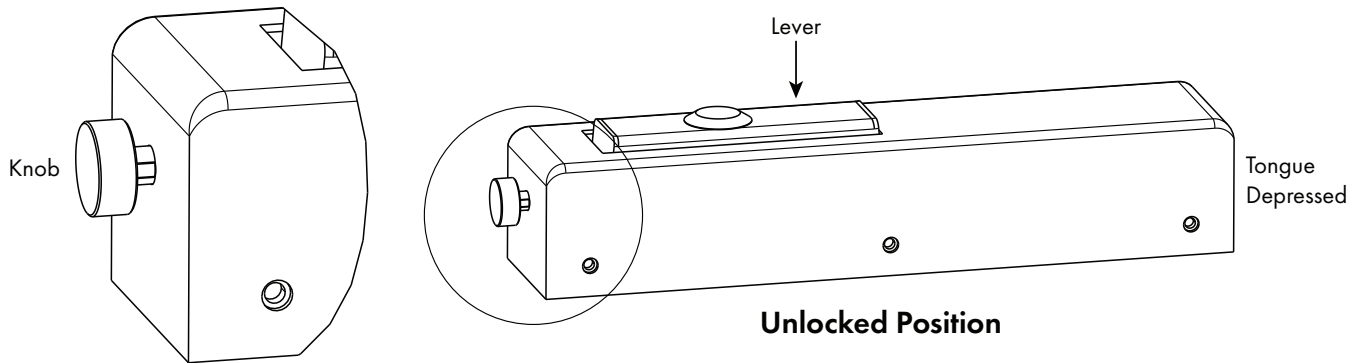
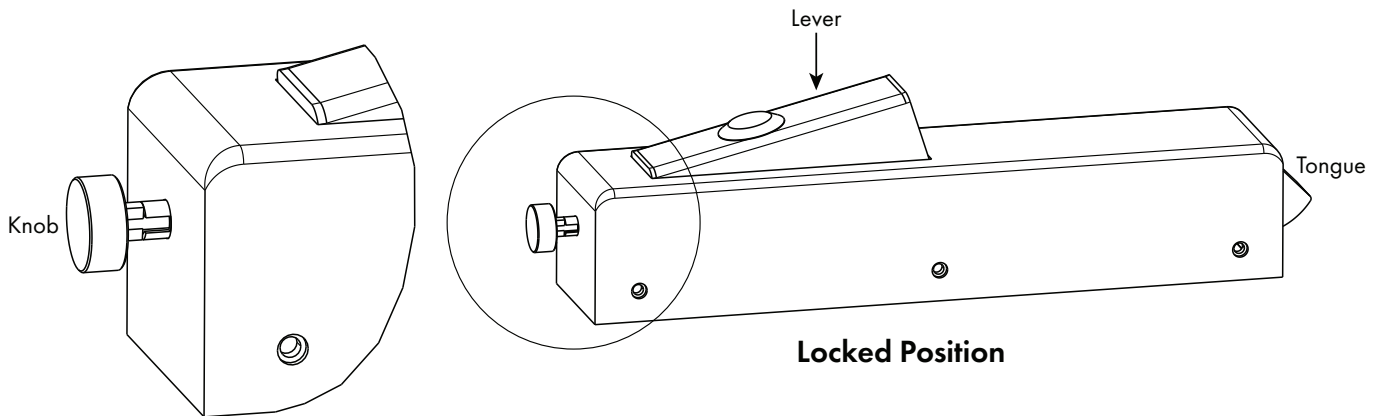
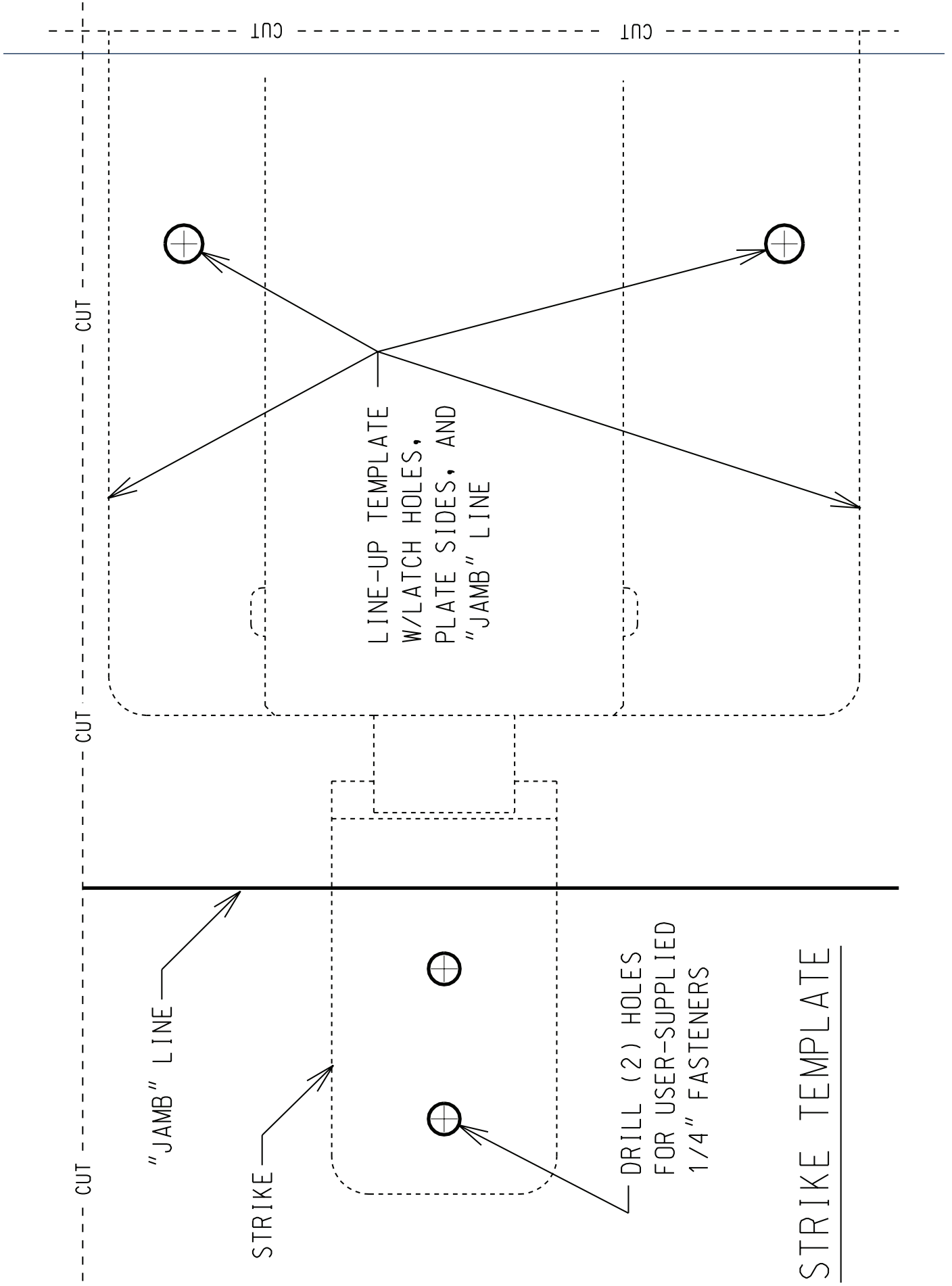


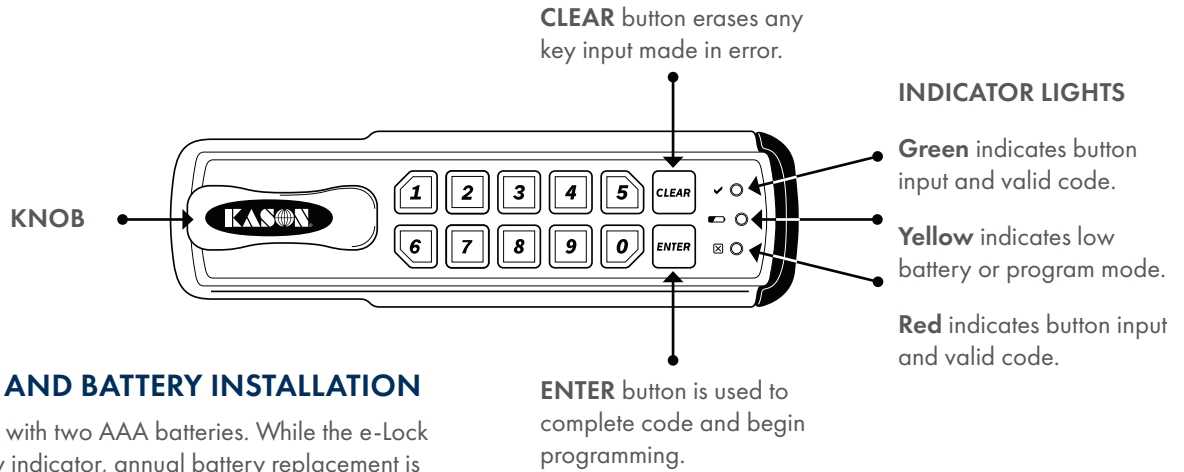
FIG. 5





0057 SecureGuard™ e-Lock High Security Latch (Indoor Use Only)

Part Number: 0057-306/0057-307



POWERING UP AND BATTERY INSTALLATION

The e-Lock is shipped with two AAA batteries. While the e-Lock features a low battery indicator, annual battery replacement is recommended. Mixing batteries of different chemistries could damage the e-Lock resulting in lock failure.

To power up the e-Lock, remove the red tag. Lock is now ready for use.

A T-15 pin in head Torx® (6-lobe) L-Key, part number 10057000339, will be required to remove the battery cover. (Not Included)

To change the batteries (Fig. 1):

1. Loosen the retaining screw.
2. Remove battery cover.
3. Press **CLEAR** 5 times.
4. Insert new batteries as shown in the illustration.
5. Reinstall battery cover, tighten retaining screw.

PROGRAMMING – INTRODUCTION

The e-Lock is easy to program and operate. The factory default code is 1234. Type in this user code and press ENTER to lock or unlock.

The supervisor can change operating codes, modes and restore lock settings. While the e-Lock is easy to program, we highly recommend reading the complete programming instructions prior to making any changes. Remember to keep track of any programming changes.

Button locations, indicator lights and knob referenced in the programming instructions are shown above.

E-LOCK PROGRAMMING MODE

To enter programming mode you must know the supervisor code. The default supervisor code is **12345**. Once in programming mode, multiple changes can be made prior to exiting programming.

There is a 10 second programming time limit between each step.

If the e-Lock times out or an error is made, programming will end and you will need to enter programming mode again.

1. e-Lock must be in the locked position prior to entering programming mode.
2. Type supervisor code and press **ENTER**.
Rotate the knob to the unlocked position and press and hold **ENTER** for 3 seconds (yellow indicator light will illuminate).
3. Release knob.
4. With the yellow indicator light illuminated, programming can begin.

CHANGING THE USER CODE

To change the user code, follow the steps above to enter e-Lock programming mode.

The factory default user code is 1234 (User codes must be 4 to 8 digits in length.)

There is a 10 second programming time limit between each step. If this e-Lock times out or an error is made, programming will end and you will need to enter programming mode again.

1. Place e-Lock into programming mode (see above).
2. Press **1** and then press **ENTER**.
3. Type the current user code and press **ENTER**.
4. Type the new user code and press **ENTER**.
5. Retype the new user code and press **ENTER**.
6. If successful, the green indicator light will illuminate for 1 second.

Continue programming or press 9 and then **ENTER** to exit programming.

0057 SecureGuard™ e-Lock High Security Latch (Indoor Use Only)

Part Number: 0057-306/0057-307

CHANGING THE SUPERVISOR CODE

To change the supervisor code, follow the steps under e-Lock Programming Mode to enter programming mode.

The factory default supervisor code is **12345** (supervisor codes must be 4 to 8 digits in length.)

There is a 10 second programming time limit between each step. If the e-Lock times out or an error is made, programming will end and you will need to enter programming mode again.

1. Place e-Lock into programming mode (see e-Lock Programming Mode).
2. Press **2** and then press **ENTER**.
3. Type the current supervisor code and press **ENTER**.
4. Type the new supervisor code and press **ENTER**.
5. Retype the new supervisor code and press **ENTER**.
If successful, the green indicator light will illuminate for 1 second.

Continue programming or press **9** and then **ENTER** to exit programming.

This e-Lock features a reset code which will restore the default supervisor code and user code. The e-Lock was shipped with a reset sticker that should be saved in a safe and secure location for future reference.

To restore the factory default supervisor and user code, type the Reset Code assigned to the e-Lock and press **ENTER**.

This e-Lock features several modes of operation. These functions can be changed using the following instructions with a valid supervisor code.

PROGRAMMING SECURITY TIMEOUT ON AND SECURITY TIMEOUT OFF

Warning: Security Timeout ON will disable the e-Lock from use for 5 minutes when 5 invalid attempts to unlock this e-Lock occur. During this time, the e-Lock will not unlock with either the valid user or supervisor code.

To change the e-Lock to Security Timeout ON or OFF, follow the steps on page 5 to enter programming mode.

There is a 10 second programming time limit between each step. If e-Lock times out or error is made, programming will end and you will need to enter programming mode again.

1. Place e-Lock into programming mode (see page 5)
 - A. To turn Security Timeout ON, type **11** and then press **ENTER**.
 - or -
 - B. To turn Security Timeout OFF, type **10** and then press **ENTER**.

2. If successful, the green indicator light will illuminate for 1 second.

Continue programming or press **9** and then **ENTER** to exit programming.

RESET USER CODE TO FACTORY DEFAULT

To reset the User Code to the factory default **1234**, follow the steps on page 5 to enter programming mode.

There is a 10 second programming time limit between each step. If the e-Lock times out or error is made, programming will end and you will need to enter programming mode again.

1. Place e-Lock into programming mode (see page 5).
2. Type **8888** and then press the **ENTER** button.
3. If successful, the green indicator light will illuminate for 1 second.

Continue programming or press **9** and then **ENTER** to exit programming.

0057 SecureGuard™ e-Lock High Security Latch (Indoor Use Only)

Part Number: 0057-306/0057-307

ADD USER TO SPECIFIC MEMORY SLOT (03 - 20)

The Supervisor Code memory location is called Slot 01 and the first User Code is called Slot 02.

1. Any additional user codes reside in memory slots 03 - 20.
2. To add a user code to a specific memory slot (03 - 20), follow the steps on page 5 to enter programming mode.

User codes must be 4 to 8 digits in length and must be different from all existing codes (including Slot 01 Supervisor Code and Slot 02 User Code).

There is a 10 second programming time limit between each step. If the e-Lock times out or an error is made, programming will end and you will need to enter programming mode again.

1. Place the e-Lock into programming mode (see page 5).
2. Press **411** and then press **ENTER**.
3. Type memory slot to be added followed by **ENTER** (for memory slots 03 - 09, you must type leading "0", e.g. "07" for slot 7).
4. Retype memory slot to be added followed by **ENTER**.
5. Type the new user code and press **ENTER**.
 - A. Retype the new user code and press **ENTER**.
 - B. If successful, the yellow indicator light will illuminate.

Continue programming or press **9** and then **ENTER** to exit programming.

DELETE USER WITHOUT SPECIFYING MEMORY SLOT

The Supervisor Code memory location is called Slot 01 and the first User Code is called Slot 02.

1. The additional user codes reside in memory slots (03-20).
2. To delete a user code without specifying a memory slot (03-20), follow the steps on page 5 to enter programming mode.

There is a 10 second programming time limit between each step. If the e-Lock times out or an error is made, programming will end and you will need to enter programming mode again.

1. Place the e-Lock into programming mode (see page 5).
2. Press **400** and then press **ENTER**.
3. Type the user code to be deleted and press **ENTER**.
4. Retype the user code to be deleted and press **ENTER**.
5. If successful, the yellow indicator light will illuminate.

Continue programming or press **9** and then **ENTER** to exit programming.

DELETE USER FROM SPECIFIC MEMORY SLOT (03-20)

The Supervisor Code memory location is called Slot 01 and the first User Code is called Slot 02.

- The additional user codes reside in memory slots (03-20).
- To delete a user code from a specific memory slot (03-20), follow the steps on page 5 to enter programming mode.

1. Place the e-Lock into programming mode (see page 5).
2. Press **401** and then press **ENTER**.
3. Type memory slot to be vacated followed by **ENTER** (for memory slots 03-09, you must type leading "0", e.g. "07" for slot 7).
4. Retype memory slot to be vacated followed by **ENTER**.
5. If successful, the yellow indicator light will illuminate.

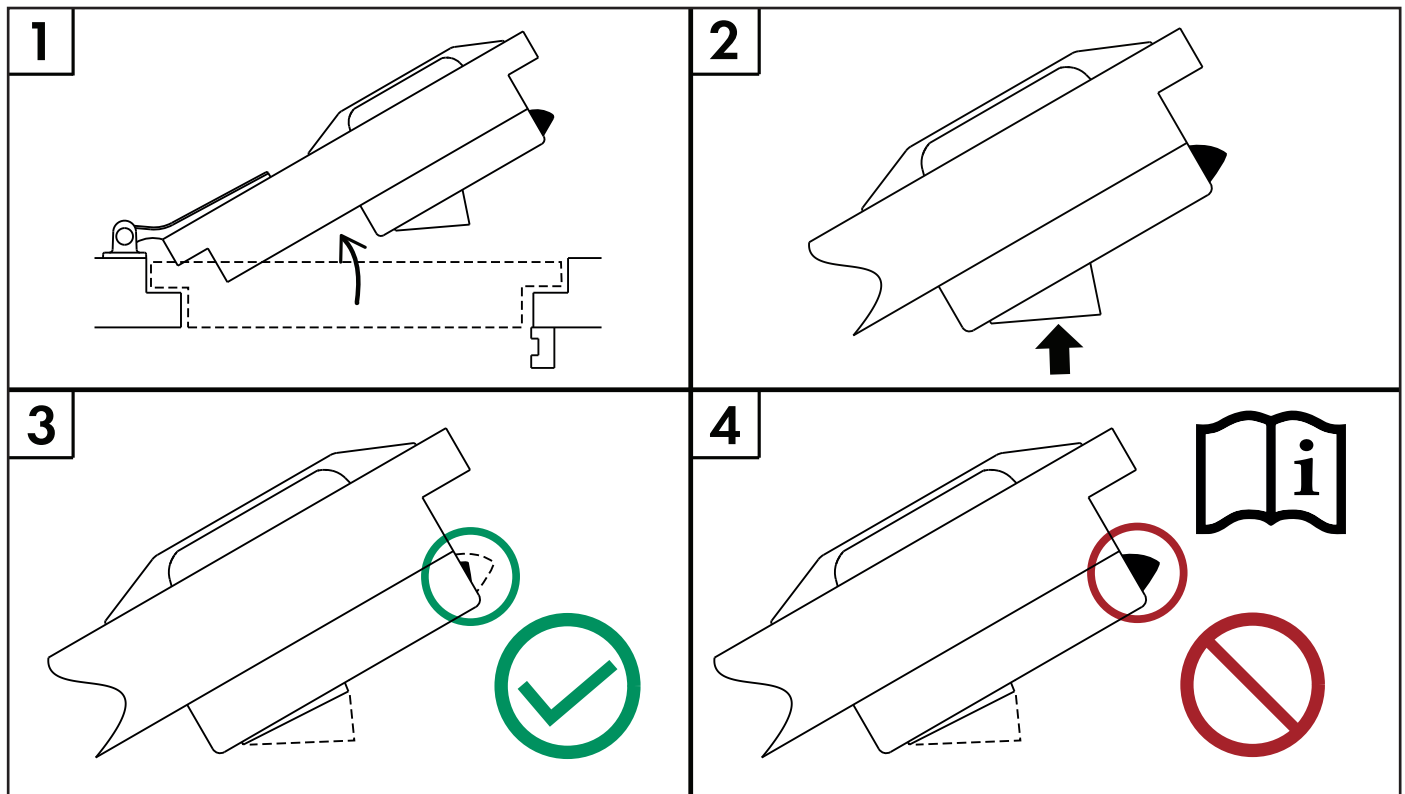
Continue programming or press **9** and then **ENTER** to exit programming.

0057 SecureGuard™ e-Lock High Security Latch (Indoor Use Only)

Part Number: 0057-306/0057-307

WARNING		Entrapment and Freeze Hazards
<p>Failure to follow the installation and testing procedures may result in personnel being entrapped and subject to extreme cold, freezing temperature and possibly death.</p>		

The door hardware includes a SecureGuard™, SafeGuard® latch, which is designed with a push bar latch that will release the door to open from the inside. Extreme or harsh use conditions of the latch, inside release, strike, key driven shaft or door, may damage or impair function of the door. For this reason, it is important to inspect and test the function of the latch, strike, key driven shaft and inside release daily before entering the walk-in. Should the outside key or inside push bar latch fail to release the door to open, do not enter the walk-in and report the problem to management so that the door, latch, key driven shaft or strike may be serviced by a professional.



See diagrams above, and follow these steps to test the function of the latch, inside release, strike, key driven shaft and door:

1. Use the outside key to release the door and swing it open (door opening indicates key driven shaft is working)
2. Press the inside latch bar into the latch housing and observe the latch tongue
3. If latch tongue pulls most of the way into the latch housing (indicates inside release is working, walk-in is safe to enter), go back to Step 1 and repeat using electronic access card
4. If latch tongue fails to pull into latch housing (indicates inside release is not working), **DO NOT ENTER** walk-in and notify management to have the door serviced