

0488L Panic Bar Inside Release and Latch Assembly (UL 305 Certified)

Part Number: 10488L*



U.S. Patent No. 11,193,311



Visit kasonind.com for information on the [0778](#) latch and [0779](#) strike options

WARNING



ENTRAPMENT AND FREEZE HAZARD

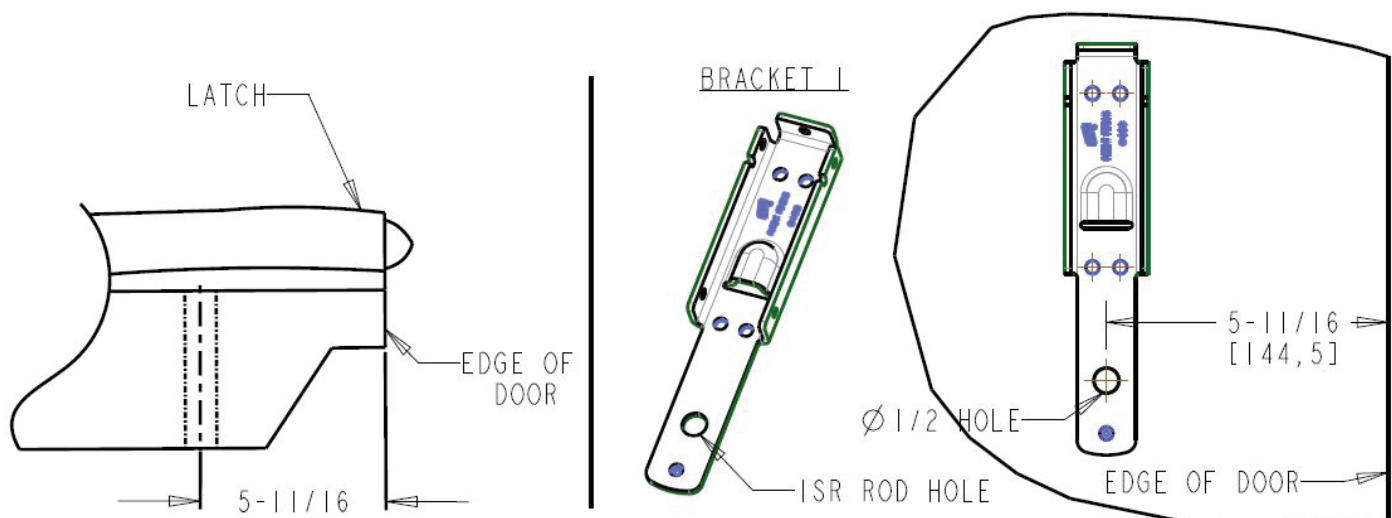
This Panic Bar ISR is only intended to be used on doors that have sufficient structural support, either a steel backing plate or other method appropriate for properly securing 1/4" stainless steel bolts/screws (not included).

Failure to follow the installation and testing procedures may result in personnel being entrapped and subject to extreme cold, freezing temperature and possibly death. See page 4 for testing procedures.

Note: UL certified for doors up to 4' x 7'

DIRECTIONS

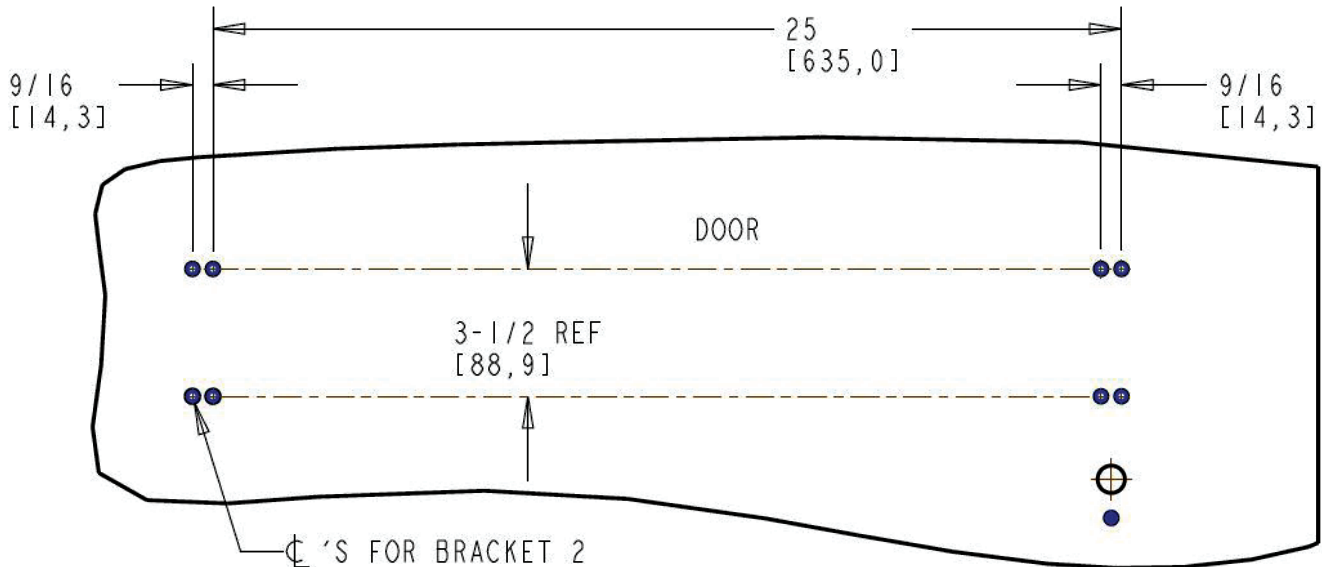
1. With door placed on work table, set Bracket 1 in position to align ISR rod hole with the same hole on outside latch ([REF IS-0778](#)). Align bracket so that it is square on the door. Mark and center punch (6) holes.



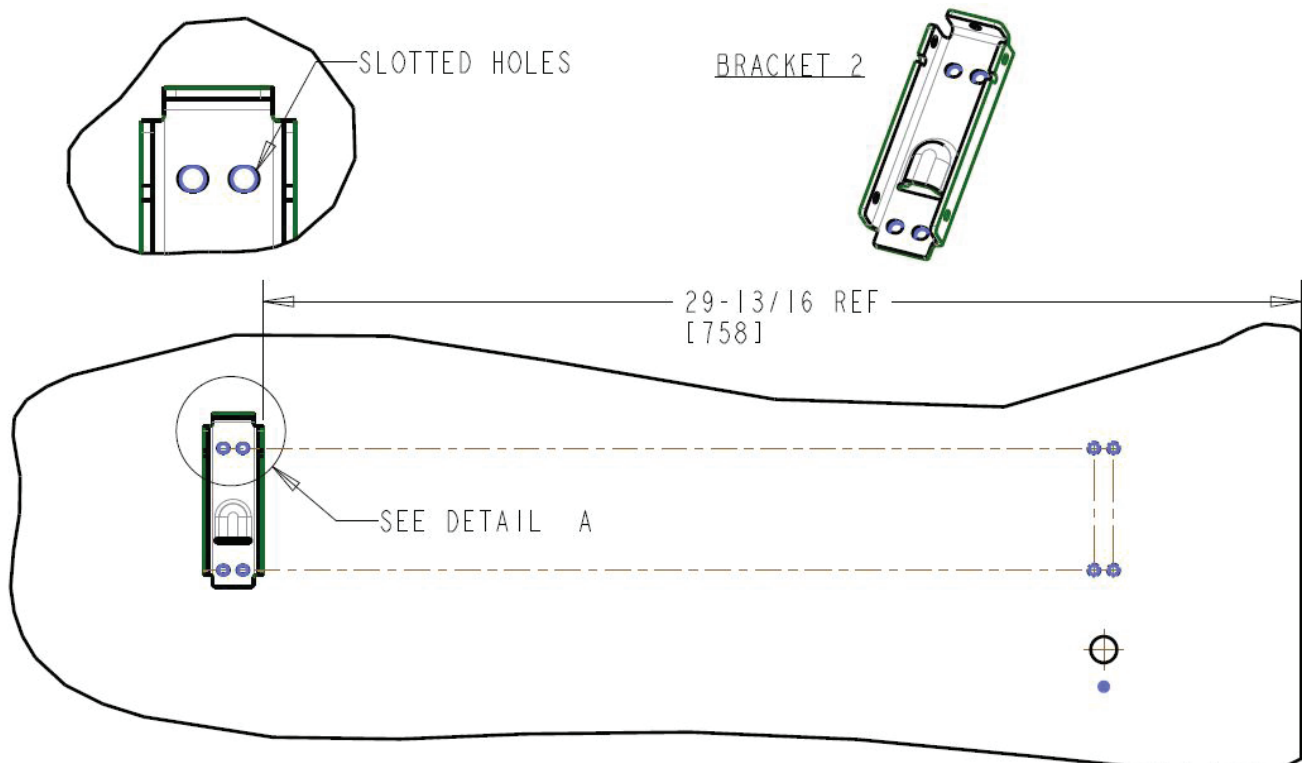
0488L Panic Bar Inside Release and Latch Assembly (UL 305 Certified)

Part Number: 10488L*

- Using a t-square, find centers of holes shown and mark horizontal centerlines for Bracket 2.



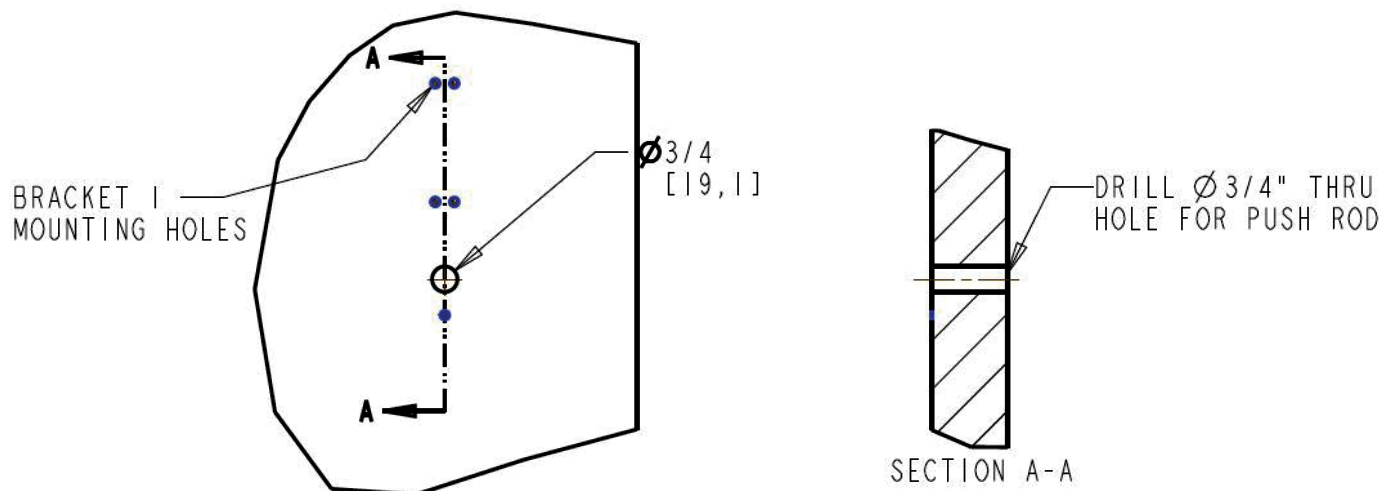
- Place Bracket 2 on door, align mounting holes with drawn centerline, square with edge of door at distance shown, mark centers of slots and center punch (4) holes.



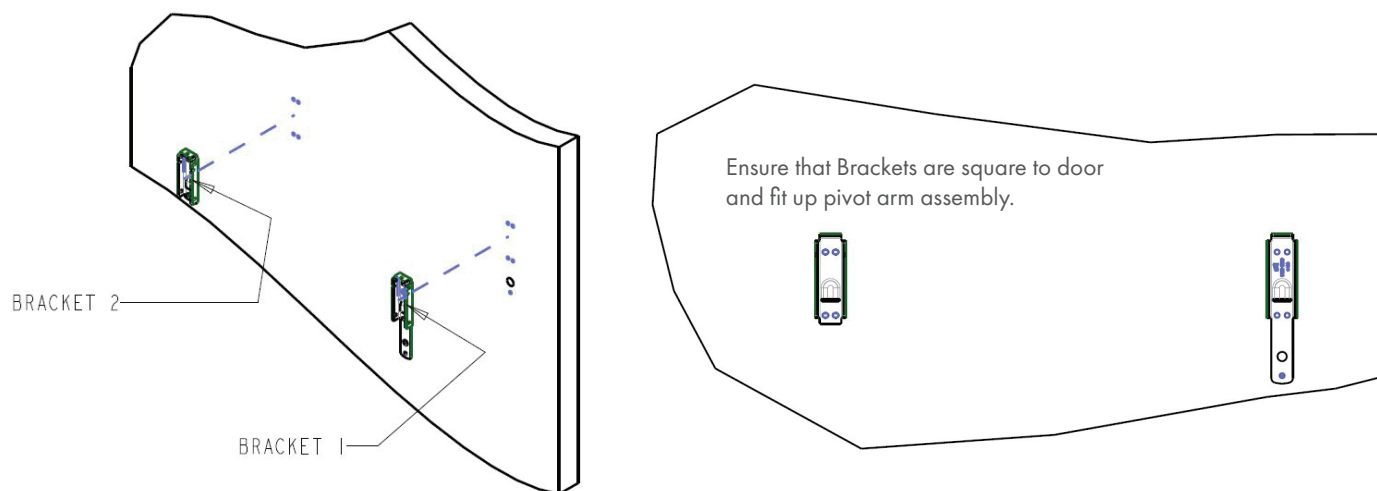
0488L Panic Bar Inside Release and Latch Assembly (UL 305 Certified)

Part Number: 10488L*

- Drill a 3/4" diameter (19.1 mm) hole through door. Hole must be square to door surface for proper alignment and operation.
At this time, drill holes size appropriate for self-threading structural 1/4-20 screws or 1/4-20 type bolts.



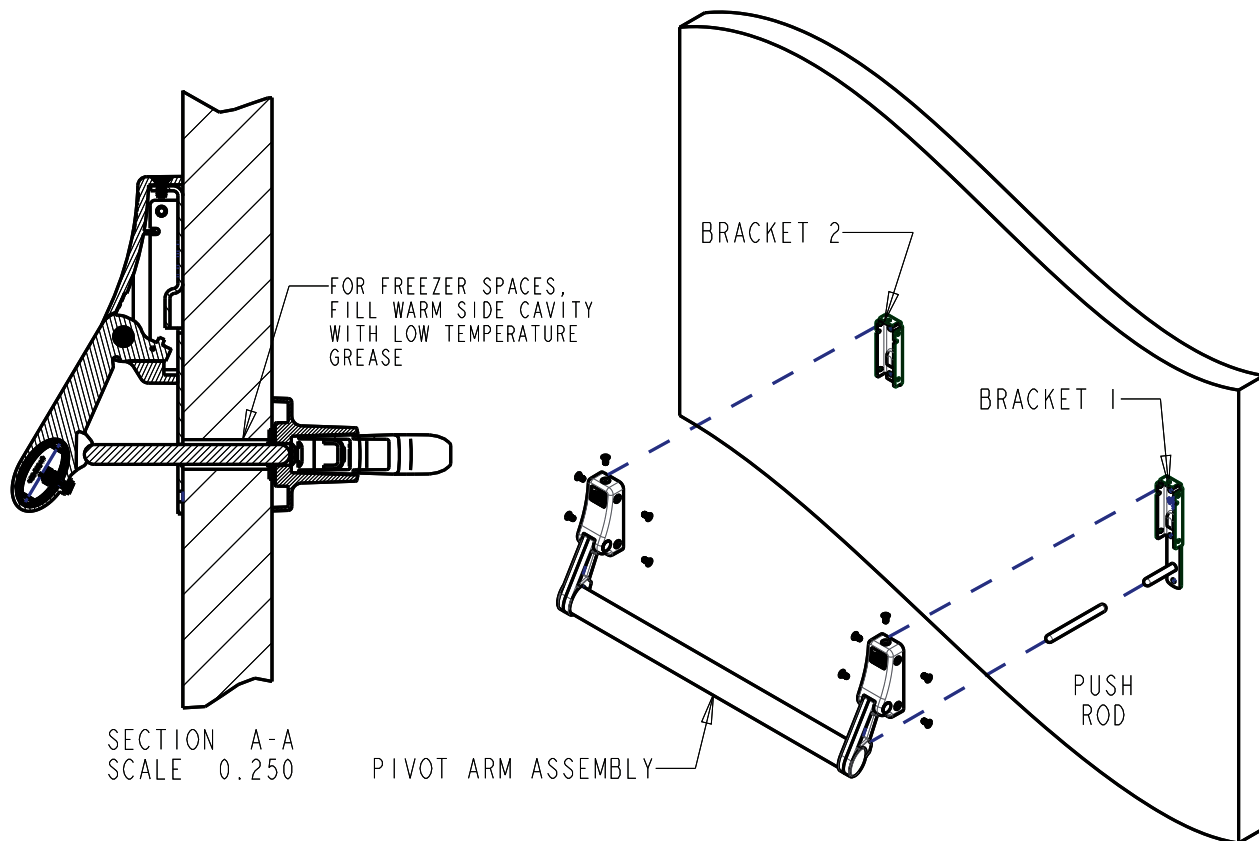
- Install Bracket 1 and 2 with 1/4-20 structural hardware (not included).



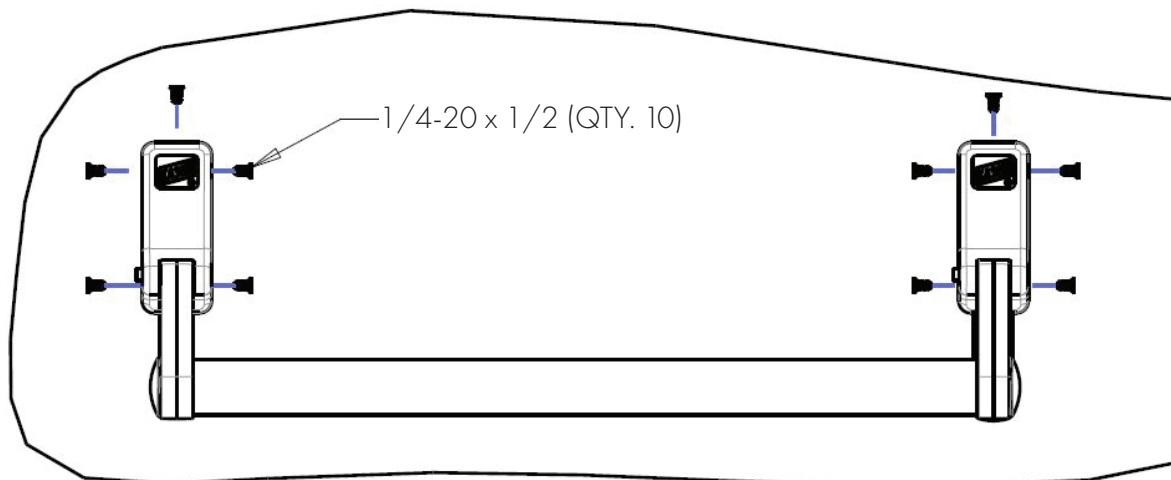
0488L Panic Bar Inside Release and Latch Assembly (UL 305 Certified)

Part Number: 10488L*

6. Install pivot arm assembly and push rod on Brackets 1 and 2.



7. Secure pivot arm assembly with hardware provided, test function, use instruction sheet [IS-0778](#) to complete installation.



0488L Panic Bar Inside Release and Latch Assembly (UL 305 Certified)

Part Number: 10488L*



WARNING

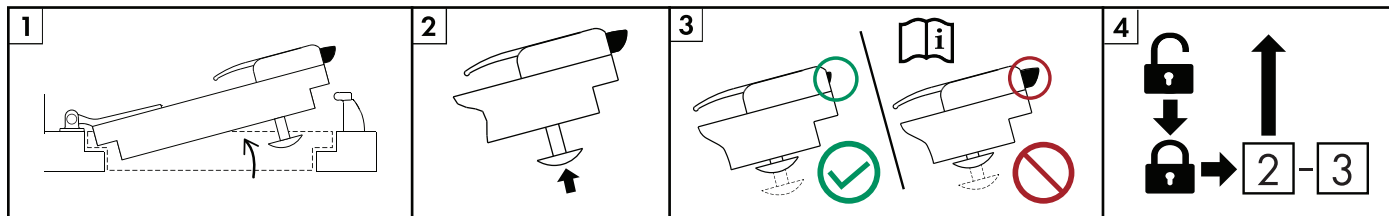


ENTRAPMENT AND FREEZE HAZARD

Failure to follow the installation and testing procedures may result in personnel being entrapped and subject to extreme cold, freezing temperatures, and possibly death.

Affix the safety decal, that came with the latch, to the door near the latch or the inside release.

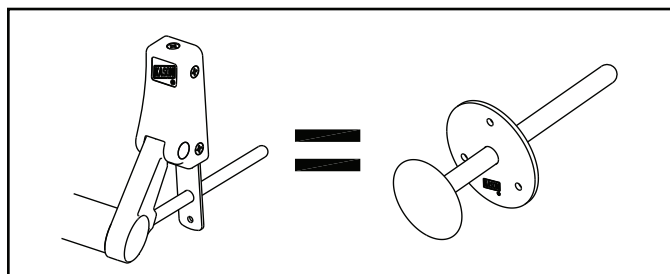
The door hardware includes a SafeGuard® latch, which is designed with an inside release that will operate the latch to open the door from the inside, when the latch has been locked on the outside. Extreme or harsh use conditions of the latch, inside release or walk-in door, may damage or impair function of the latch. For this reason, it is important to inspect and test the function of the latch and inside release daily before entering the walk-in. Should the latch or inside release fail to release the latch and allow door to open from the inside, do not enter the walk-in and report the problem to management so that the door, latch or inside release may be serviced by a professional.



TESTING PROCEDURE

1. Open the door.
2. With the door open, push to depress the inside release knob (or push bar).
3. (A) If the latch tongue retracts substantially into the latch with the release knob depressed, the latch and inside release are functioning properly.
3. (B) If the latch tongue does not retract substantially into the latch, do not enter the walk-in, and notify management to have the door serviced.
4. Lock the door using key cylinder and/or padlock and repeat steps 2 and 3.

Note: After passing the step 4 test with latch locked, unlock the latch and continue with normal use of the door.



Note: Actual latch or inside release provided with the door may look different than those shown in testing diagram above. Refer to instructions and safety decal provided with your latch.