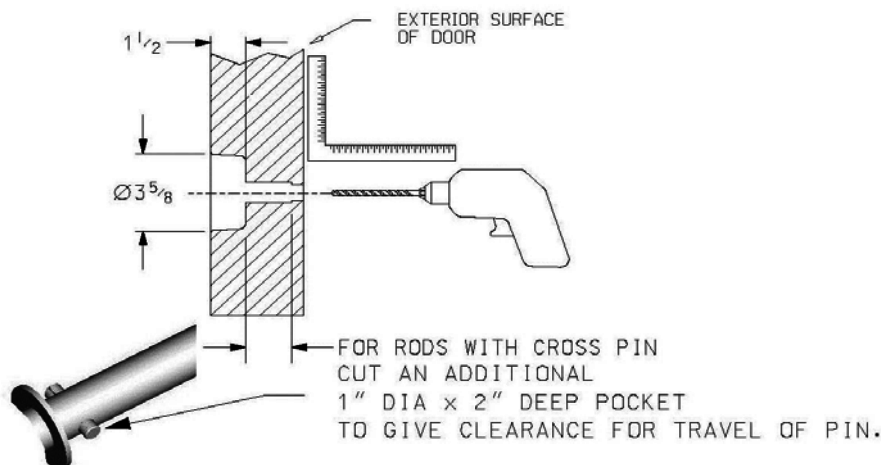


0489 Narrow Recessed Inside Release Handle

Part Number: 10489A*

1. Starting at the door exterior surface, drill a 3/4" dia. (19.1 mm) through hole aligned with ISR feature on latch. Be certain to drill square to the door face as shown in **Fig. 1**.
2. Moving to the interior surface of the door, cut a 3-5/8" dia. (92 mm), 1-1/2" (38.1 mm) deep hole, located on center of the 3/4" through hole.

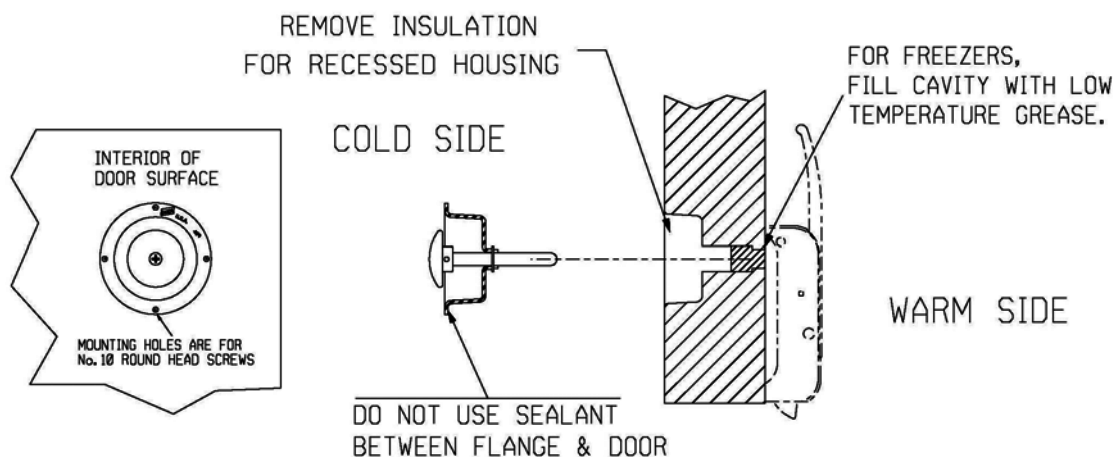
FIG. 1



3. Hollow out the insulation within the cut-out area to the 1-1/2" depth. Hole will accept recessed housing as shown below. Check fit by placing recessed housing in large hole on interior side of door aligning center hole with 3/4" through hole. Push rod must move freely through insulation.

For Freezers: Fill warm side cavity with low temperature grease to limit air infiltration and ice formation.

FIG. 2



4. Mount housing to door with (4) four #10 (5.0 mm) round head screws.
5. Test to assure release function.

WARNING: Function is critical. Entrapment in freezer can cause severe injury or death.