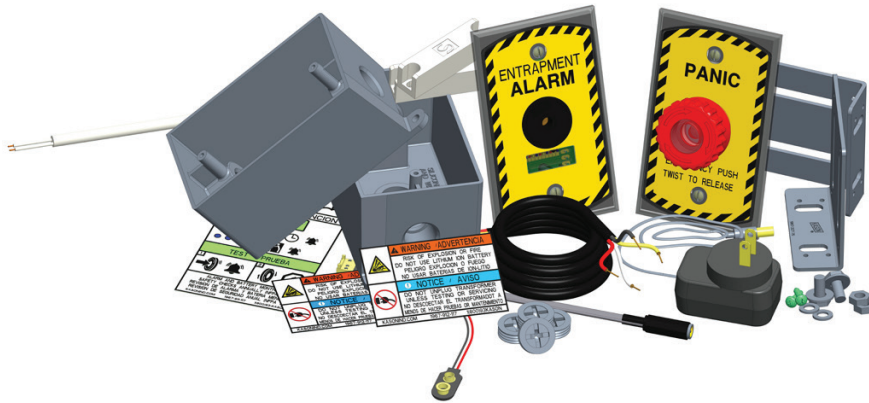


1967-A57 Entrapment Alarm

Part Number: 11967012A57



| | | |
|---|--|---|
| ⚠ WARNING/ADVERTENCIA | | ENTRAPMENT AND FREEZE HAZARD PELIGRO DE QUEDAR ENCERRADO Y CONGELAMIENTO |
| Check for occupants before resetting alarm / Verifique que no este ninguna persona antes de volver a poner la alarma | | |
| ⚠ WARNING/ADVERTENCIA | | RISK OF FIRE OR EXPLOSION PELIGRO EXPLOSION O FUEGO |
| Do not use lithium ion Battery / No Usar Baterias de ion-litio | | |
| ! NOTICE/ADVISO | | |
| Do not unplug transformer unless testing or servicing / No desconectar el tranformador a menos de hacer pruebas o mantenimiento | | |

SAFETY

This product is a safety device that must be installed, maintained, and serviced by qualified personnel. Audible alarm, panic button, door sensors, and security connections should be checked for damage and tested for proper operation monthly. Personnel training and operating procedures related to this device should be in place at the installed facility. Best practices for emergency communication systems and annual testing can be found in NFPA 72.

Lithium-ion battery is not approved to be used with this system. Recycle responsibly when replacing battery that is lower than 6.5 volts. Monthly checks are required to ensure proper voltage is maintained for the battery back-up circuit.

Safety labels are provided to remind the end user on how important monthly checks are to ensure proper operation. Please apply these labels around or near the exterior alarm module and where the transformer is plugged in.

OPERATING SPECS

1967-A5 EXTERIOR ALARM MODULE

- Audible: 100+ dB siren: two tones, Panic and Door open
 - Door Open Alarm can Siren: Off, Instantly, 10 min, 20 min
 - Panic Alarm: Instantly, until the panic button is reset
- Visual LED Flashes: LEDs alternate to attract attention
 - Sequencing Blue LED is normal operation
 - Red/Yellow Alarm: Instantly comes on Door Alarm
 - Red/Blue Panic Alarm: Instantly comes on Panic Alarm
- Dial Signal: Allows a security system to monitor alarm events
 - Door Open Alarm: Off, Instantly, 15 min, 30 min
 - Panic Alarm: Instant notification to security system
 - Dial connection goes from (NC) to open circuit

1967-A7 INTERIOR PANIC BUTTON

- Illuminated button (12 V operation)
- Button illumination not polarized. Can be wired either way
- Panic button push in to sound alarm, twist and pull out to reset



1967-A57 Entrapment Alarm

Part Number: 11967012A57

EXTERIOR INSTALLATION (See Fig. 1)

1. Install or locate a 120 VAC outlet box to plug the transformer in.
2. Mount handy box for alarm module. **Note:** Alarm module is designed to be seen and heard. Keep handy box high enough to allow siren broadcast without obstacles.
3. Route 1967-946 power/battery cable (Fig. 3) into alarm module handy box, along with door sensor (if applicable), security connection wiring (if applicable) and 1967-936 (20/4 wire for panic button).
4. Review wiring diagram and make all connections securely. **Note:** When adding door sensor (remove jumper wire if installed) When adding panic button(remove resistor from white / yellow terminals) **Note:** all wire connections can be wired in reverse because they are not polarity sensitive. Do not put red and black wire in white and yellow terminals. This is a signal input and could damage the microchip.
5. Set timers / security settings. "CONFIGURING ALARM MODULE"

EXTERIOR INSTALLATION (See Fig. 2)

6. Mount interior handy box for the panic button. **ADA Compliance:** Review mounting height requirements for panic or emergency buttons.
7. Route 1967-936 (20/4 wire) from the interior handy box.
8. Terminate red and black wires in the center terminal set on button. Wires can be switched without polarity concerns. This is 12 V circuit to illuminate the button, powered from the alarm module.
9. Terminate yellow and white wire to the side terminal of the button. This is for switch signal. Normal operation the switch is closed circuit. When button is pushed the signal is open circuit. Check continuity and voltage during testing. (Fig. 3)
10. Apply silicone in the conduit hole leading to the exterior. Proper sealing will reduce the accumulation of water inside the handy box. Failed seal can lead to voided warranty.
11. Install panic button with provided gasket, screws and small plastic washer. Silicone can be added to the gasket to increase sealing.

FINAL INSTALL

12. Connect battery. Do not use lithium-ion battery. (See Fig. 4) **Note:** Alarm will go off as soon as battery is installed if the interior panic button is not installed yet.
13. Install alarm module to handy box with gasket, screws and small clear washers (provided).
14. Install safety decals.

Fig. 1

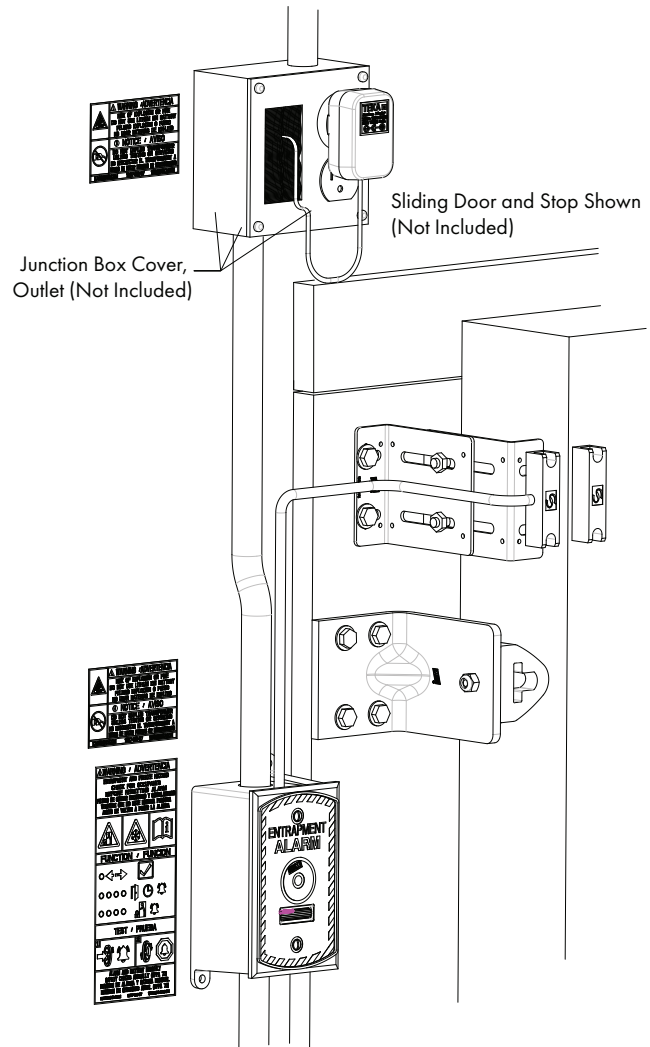
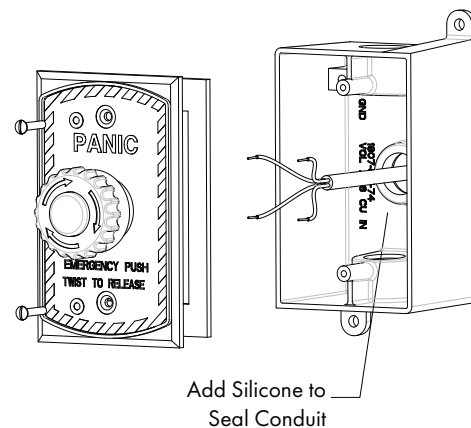


Fig. 2



1967-A57 Entrapment Alarm

Part Number: 11967012A57

Fig. 3

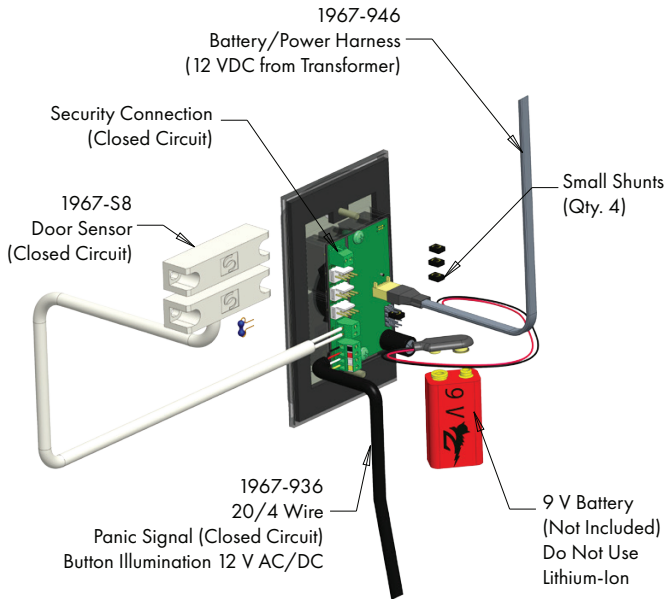


Fig. 4

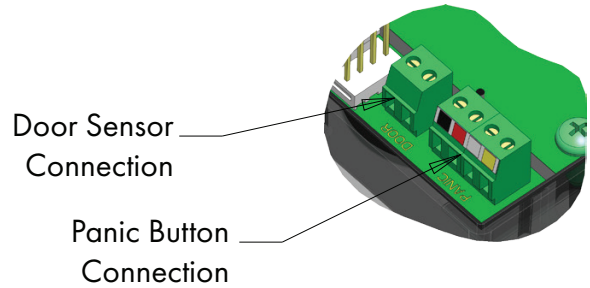


Fig. 5

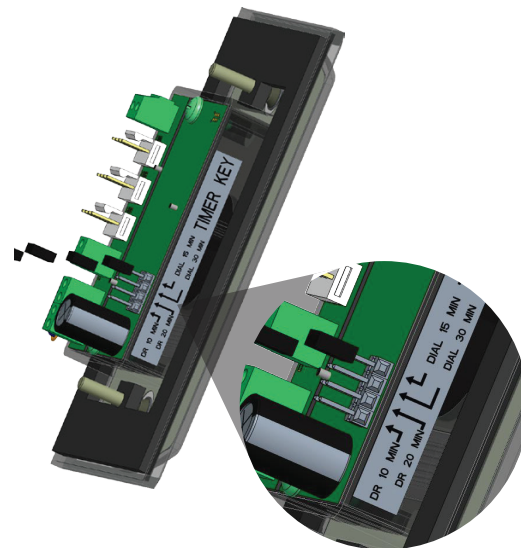
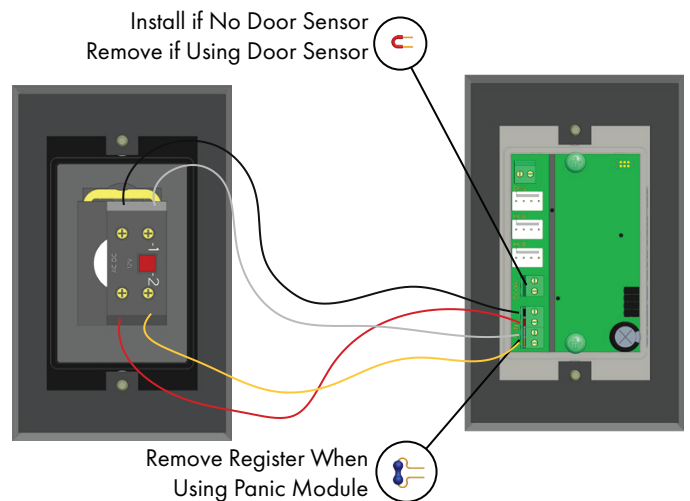


Fig. 6



CONFIGURING ALARM MODULE SECURITY CONNECTION TERMINALS "DIAL" (FIG. 3)

- An entrapment/panic or door-open alarm can activate a connected security system (not provided). This uses a normally closed (NC) circuit that opens during an alarm. The "DIAL" terminal is used for the security system connection and opens the circuit to trigger the alarm
- Panic event will signal security system without delay
- If door-open monitoring is added, use the shunt (see Fig. 5) to select the time delay after the audible alarm. The shunt allows selection of a 15- or 30-minute delay. Installing both shunts enables a "no delay" security system connection

DOOR CONNECTION TERMINALS "DOOR" (FIG. 4)

- Door sensor 1967-S8 can be added (NC when door is closed)
- Remove red wire from terminal if installed
- **Door Alarm Timer Delay:** "DR" option is 10 or 20 min. If you do not want a delay, place shunt in first two spots. Alarm will sound immediately

PANIC BUTTON (FIG. 6)

- Terminals (Red/Black) will constantly power (+12 VDC) the Panic button illumination. Red is (+) and Black is (-)
- Terminals (white/yellow) connect to the Panic switch normally closed (NC) circuit connections. Remove and discard resistor

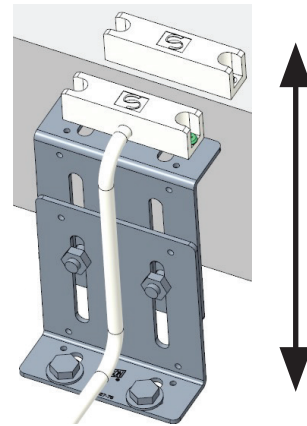
1967-A57 Entrapment Alarm

Part Number: 11967012A57

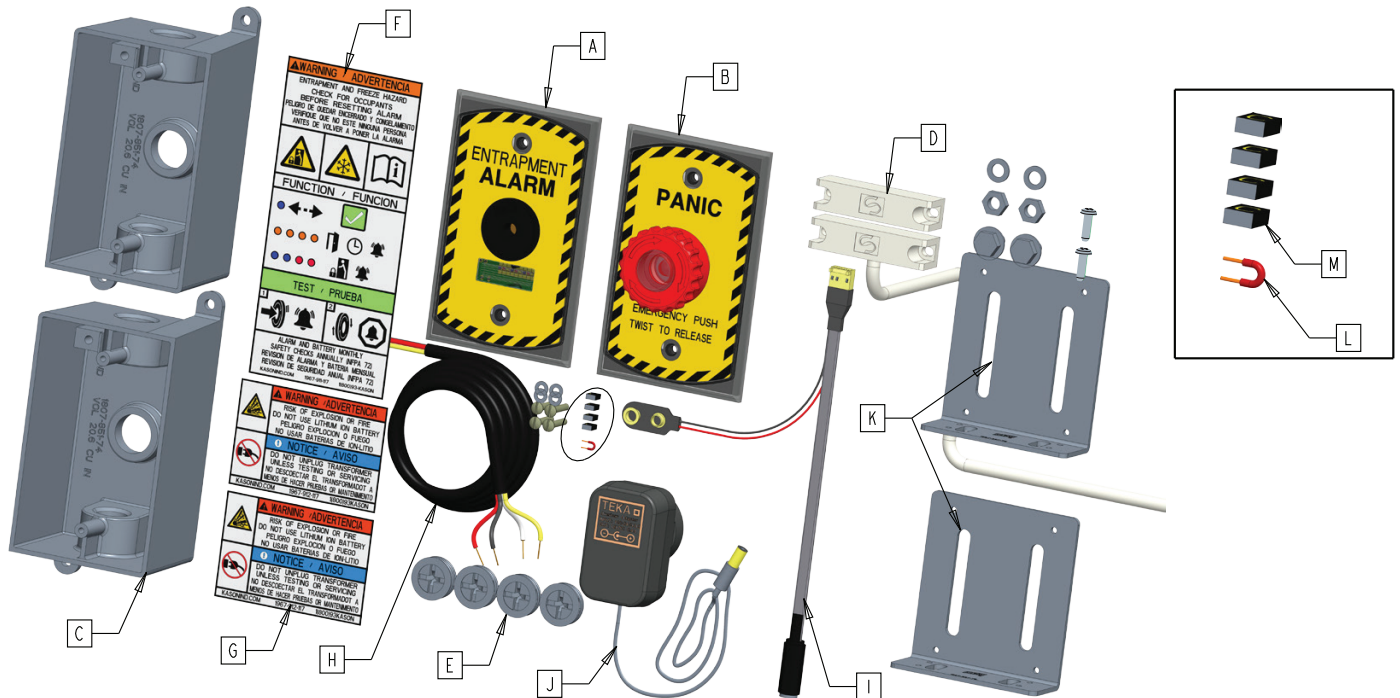
DOOR SENSOR MOUNTING BRACKET

For offset and sliding doors use the provided door sensor mounting kit. Kit is configurable to adjust up to 5" and as low as 1-1/4".

Brackets are made of aluminum and can be dented if needed. Kit includes everything needed to mount the sensor and fasten together. (Mounting hardware is not included to mount to wall panel or door)



What is Included in the Kit



| Item | Part No. | Description | Qty./ Carton |
|------|----------------|------------------------|-----------------|
| A | 119670000A5 | Panic alarm module | 1 |
| B | 119670000A7 | Panic button | 1 |
| C | 91807008510074 | Deep handy box | 2 |
| D | 119670000S8 | Door sensor | 1 |
| E | 11803004170054 | 1/2 NPT knock-out plug | 4 |
| F | 11967009110117 | Alarm safety label | 1 |
| G | 11967009120117 | Unplug warning label | 2 |

| Item | Part No. | Description | Qty./ Carton |
|------|-------------|-------------------------|-----------------|
| H | 11967000936 | 20/4 wire (4-color) | 1 |
| I | 11967000946 | Battery and power wire | 1 |
| J | 11967000012 | Transformer (12 V) | 1 |
| K | 1196000327 | Door sensor bracket kit | 1 |
| L | Jumper | Red jumper wire | 1 |
| M | 1196700500 | Small 0.100" Shunt | 4 |

1967-A57 Entrapment Alarm

Part Number: 11967012A57

TESTING

Press panic button to set off Entrapment Alarm. 100dB siren will sound and the front LEDs will alternate brightly red and blue. If connected, the "Dialer" connection will trigger an open circuit when the panic button is activated. **Note:** Always check with security company, when testing, to avoid false alarms.

To reset inside panic button, twist clockwise and the button will pop out.

MAINTENANCE

Regular Testing: Test the system monthly to confirm functionality. Always refer to door latch manufacturer recommendation for testing frequency.

Battery Check: Replace the backup battery once a year, or immediately if low-battery.

ERRORS AND TROUBLESHOOTING

- No Power
 - **Causes:** Dead battery or loose battery, bad transformer
 - **Correction:** Replace battery, replace transformer
- Dialer/Security system doesn't detect alarm
 - **Cause:** Loose wires, jumpers need to be inserted (door sensor), pinched/broken wires
 - **Correction:** Tighten screw terminals and slightly pull on wires to make sure they are installed correctly. Replace wires and check continuity
- Unit starts beeping and LED flashes Red/Blue as soon as the power is connected
 - **Causes:** Panic button pressed in or wire is not connected securely to all wire terminals
 - **Correction:** Reset panic button by twisting the knob. Tighten or replace wires and replace resistor on yellow/white terminal to silence alarm
- Unit starts beeping and/or the LEDs flash Red/Yellow
 - **Causes:** Door sensor is damaged, loose, or jumper is not installed (if not using door sensor)
 - **Correction:** Make sure the door is closed. Check the jumpers to "see settings". If not using door sensor, replace with red jumper provided
- Unit blue LED are dim or do not sequence:
 - **Causes:** Low voltage to alarm module
 - **Correction:** Replace transformer and check the hub connection is good and not loose