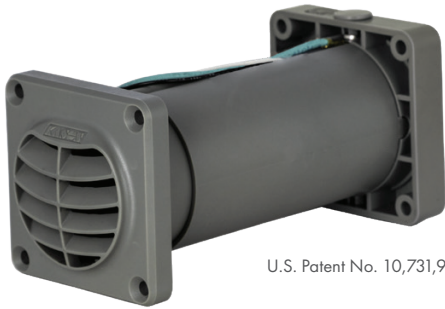


1825LE Intelli-Vent® Pressure Relief Port (Replacement for 1825 Port)

Part Number: 11825LE*

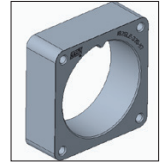


U.S. Patent No. 10,731,912; 10,739,055

Exterior View

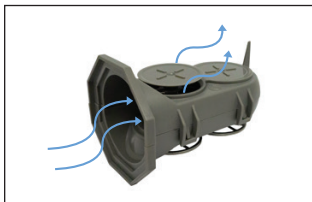
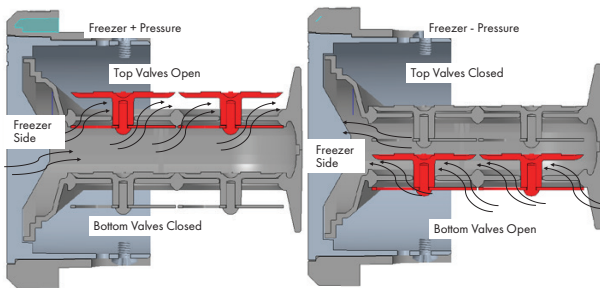


Interior View

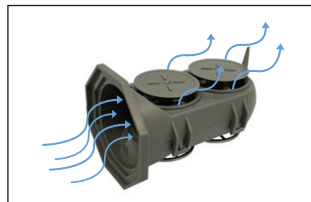


Spacer for 3" Wall

Kason® Intelli-Vent® Dual Airflow Design



Intermediate Flow



High Flow

MATERIALS

- **Heated Cover:** Gray polycarbonate
- **Heated Louver:** Die cast aluminum
- **Heater Sleeve:** Gray ABS
- **Louver Exterior:** Gray ABS
- **Valve:** Gray ABS
- **Cap:** Gray ABS
- **Retaining Wheel:** 300 series stainless steel
- **Label:** Mylar
- **Screen:** Aluminum
- **Screws and Washers:** Zinc plated steel
- **Heater:** Printed element encased in polymer thick film

*Part No.	Description
11825LE0004	Pressure Relief Port, 120 VAC, 4" to 6" Wall Thickness
11825LE0006	Pressure Relief Port, 230 VAC, 4" to 6" Wall Thickness
11825LE0008	Pressure Relief Port, Non-Heated, 4" to 6" Wall Thickness
11825LE3350117	3" Wall Spacer

The 1825LE pressure relief port is designed to improve the functionality and efficiency of walk-in coolers and freezers utilizing a specially designed dual port staged valve and heated faceplate.

• Dual Port Vent

- Provides high-flow capacity so doors open/close easier and faster
- Coolers up to 7,000 cf
- Freezers up to 3,500 cf

• Heating element integrated with faceplate to eliminate freezing

• Body adjusts telescopically from 4" to 6" to fit multiple wall thicknesses

• Rated -30°F to 40°F (-34°C to 4.4°C) U.L. File No.: 57306

• Low wattage consumption

- 0.05 Amp @ 120 VAC, 50/60 Hz, 5 W heater
- 0.03 Amp @ 230 VAC, 50/60 Hz, 5 W heater