

## 1253 Oblique Cam-Rise Hinge

Part Number: 11253\*

### FEATURES

- Designed to quickly lift sweeper gasket on opening to increase gasket life
- Smooth operation increases closing force without internal spring
- Spring kit option available to increase closing momentum
- Reversible for Left/Right hand door openings
- Built in dwell holds door open after 120° rotation
- Door lifts off without disassembly or removal of hinges
- Upper and lower hinge sold separately
- **Finishes:** chrome, brushed chrome or powder coated

### MATERIALS

- **Flange, Strap:** Zinc zamak #3, chrome plated
- **Cam, Follower:** Nylon, 6/6 compound
- **End Cap:** Polyethylene
- **Hex Rod:** Steel, Zinc plated
- **O-Ring:** Rubber compound

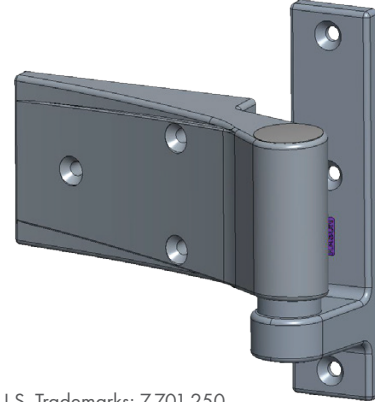
### DESIGN CRITERIA

- Safe working load of 3990 in-lb resisting moment per pair; [Group 'D' on Kason Industries Hinge Selection Chart](#)  
(Example: 220 lb, weight for a 36" door =  $220 \times 36/2 = 3960$  in-lb (OK))
- Dwell beyond 120°
- 250,000 cycles by test without any significant wear
- Accept 1/4" (6 mm) flat or oval head fasteners
- **Temperature Rating:** -20°F to 150°F (-28.9°C to 65.5°C)

*Part No.	Description	Finish
11253000002	Lower Right Hand†	Brushed Chrome
11253000004	Upper Right Hand†	Brushed Chrome
11253000006	Lower Right Hand†	Polished Chrome
11253000008	Upper Right Hand†	Polished Chrome
11255000001	Spring Kit	Brushed Chrome
11255000003	Spring Kit	Polished Chrome

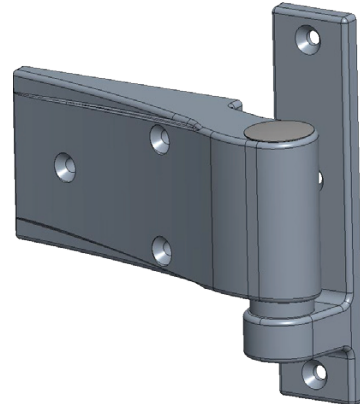
†Arrives right hand hinged standard; easily converts to left hand hinged

1253-2

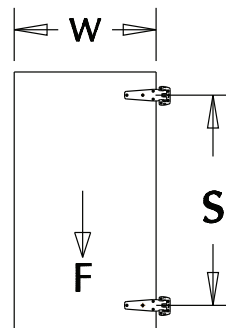


® U.S. Trademarks: 7,701,250

1253-4



### Safe Working Load Formula



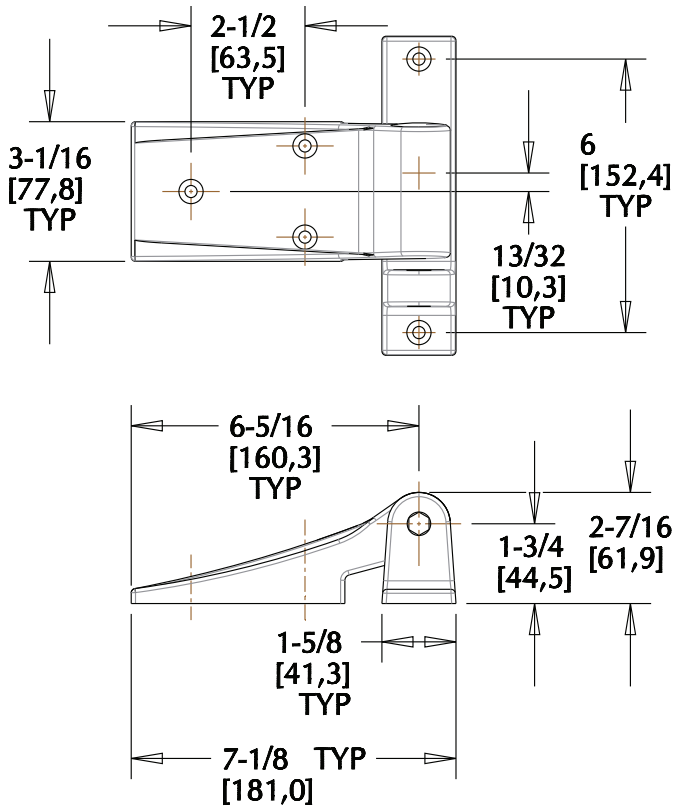
$W$  = Door width, inch  
 $F$  = Door weight, lb  
 $M$  = Moment on hinge, in-lb  
 $(F \times W/2 = 3990 \text{ in-lb})$   
 $S$  = Suggested minimum hinge spacing (1.5  $W$ )



# 1253 Oblique Cam-Rise Hinge

Part Number: 11253 \*

Lower Hinge



Upper Hinge

