

1827 Intelli-Vent® Telescoping Heated Pressure Relief Port

Part Number: 1182700000 *

FEATURES

- Dual port valves adjust to flow conditions to work in a wide range of walk-in sizes and environments
- High-flow capacity for walk-in sizes up to 10,000 cf for coolers, and 5,000 cf for freezers
- Heater coupled directly to louver for better frost resistance, rated down to -30°F (internal temperature of freezer)
- Lower wattage consumes less energy than competitive models of same flow capacity
- Telescopic adjustment for wall thicknesses from 3 1/2" to 5"
- Compact design, fits in tighter spaces than vents with same flow capacity
- NSF listed and UL recognized design

MATERIALS

Heated Cover: Gray polycarbonate

Heated Louver: Die-cast aluminum

Heater Sleeve: Gray ABS

Louver Exterior: Gray ABS

Valve: Gray ABS

Retaining Wheel: 300 series stainless steel

Internal Fasteners: Steel, commercial zinc plate

Label: Mylar

Screen: Aluminum

Heater: Wire wound silicone rubber encased element, or etched printed element encased in polymer thick film

Mounting: (8) #10 (5 mm) flathead screws (not included)

DESIGN CRITERIA

Temperature Range

-30°F to 40°F (-34°C to 4.4°C)

U.L. File No.: 57306

Power

0.05 Amp @ 120 VAC, 50/60 Hz, 6 W heater

0.03 Amp @ 230 VAC, 50/60 Hz, 6 W heater

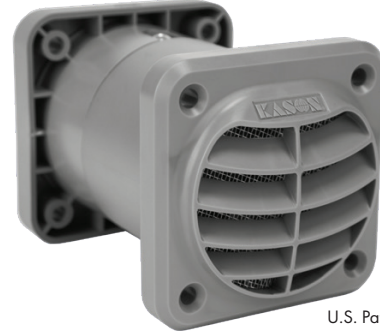
INSPECTION

Hi-pot test, 1500 VAC for 1 second max, dimensional check, functional check and appearance check.

WARNING

To ensure safe installation, follow instructions enclosed within product shipping carton.

*Part No.	Description
11827000004	Pressure Relief Port, 120 V, 3-1/2" to 5" WI
11827000006	Pressure Relief Port, 230 V, 3-1/2" to 5" WI



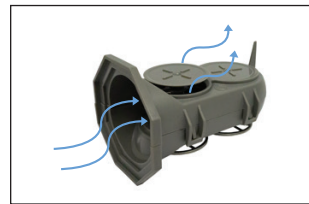
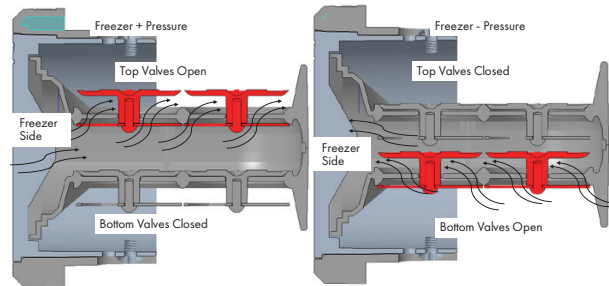
U.S. Patent No. 10,731,912;
10,739,055

Outside Walk-in

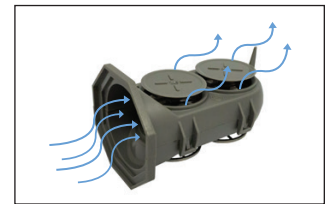


Inside Walk-in

Kason® Intelli-Vent® Dual Airflow Design



Intermediate Flow



High Flow

1827 Intelli-Vent® Telescoping Heated Pressure Relief Port

Part Number: 1182700000 *

