



LINECARD **WALK-IN**



It's Better with Kason.

HINGES

0094 Super Freezer Hinge



Cast tenzalo

Offset

5-1/4" (133.4 mm) or higher

0998 Super Freezer Hinge



Malleable iron

Offset

4" (101.6 mm) or higher

1037 Forged Brass Hinge



Forged brass with stainless steel pin and nylon bearing washers

Offsets

Flush and 1-1/8" (0 and 28.6 mm)

1055 Heavy-Duty Hinge



Forged brass with stainless steel pin and nylon bearing washers

Offset (Ranges from...)

Flush to 1-7/16" (0 to 36.5 mm)

1073 Heavy-Duty Hinge



Forged brass with stainless steel pin and nylon bearing washers

Offset (Ranges from...)

Flush to 1-7/16" (0 to 36.5 mm)

1074/1075 Heavy-Duty/1076 Extra Heavy-Duty Steel Strap Hinge



Steel

Offset (Ranges from...)

1074:
Flush to 1-1/8" (0 to 28.6 mm)

1075:
Flush to 1-3/8" (0 to 34.9 mm)

1076:
1-1/8" to 1-3/8" (28.6 to 34.9 mm)

1214 Heavy-Duty Iron Strap Hinge



Malleable iron strap, steel flange

Offset (Ranges from...)

7/8" to 1-1/2" (22.2 to 38.1 mm)

1240 Aluminum Hinge



High pressure die-cast aluminum; nylon cam and follower

Offset (Ranges from...)

Flush to 1-3/8" (0 to 34.9 mm)

1241 Heavy-Duty Double Knuckle Hinge



High pressure die-cast zinc with stainless steel pin and nylon bearings

Offsets

Flush and 1-1/8" (0 and 28.6 mm)

1243 Reversible Oblique Hinge



High pressure die-cast zinc with self-lubricating nylon cam

Offset (Ranges from...)

Flush to 2" (0 to 50.8 mm)

1245 Reversible Cam-Rise Hinge



High pressure die-cast zinc with self-lubricating nylon cam

Offset (Ranges from...)

Flush to 2" (0 to 50.8 mm)

1246 Reversible Cam-Rise Hinge



High pressure die-cast zinc with self-lubricating nylon cam

Offset

Flush (0 mm)

1248 Spring Assisted Hinge



High pressure die-cast zinc with self-lubricating nylon cam

Offsets (Ranges from...)

Flush to 2" (0 to 50.8 mm)

1249 Spring Assisted Hinge



High pressure die-cast zinc with self-lubricating nylon cam

Offsets

Flush (0 mm)

1251 Heavy-Duty Double Knuckle Hinge



High pressure die-cast zinc with stainless steel pin and nylon bearings

Offsets (Ranges from...)

1-1/8" to 1-3/8" (28.6 to 34.9 mm)

1253 Oblique Cam-Rise Hinge



Zinc zamak #3, chrome plated flange and strap

Offset
Flush (0 mm)

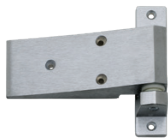
1255 Pacesetter Hinge



High pressure die-cast zinc with self-lubricating nylon cam

Offset
Flush (0 mm)

1256 Pacesetter Hinge



High pressure die-cast zinc with self-lubricating nylon cam

Offset
Flush (0 mm)

1275/(1276 Enlarged) Heavy-Duty Cam-Rise Strap Hinge



Heavy gauge steel strap, malleable iron flange

Offset (Ranges from...)
1-1/8 to 1-1/4 (28.6 to 31.8 mm)

1277 Series Heavy-Duty Hinges



High pressure die-cast zinc flange, 3/16" (4.8 mm) thick steel strap, 5/8" (15.9 mm) diameter steel cam pin

Offset (Ranges from...)
1-1/8 to 1-7/8 (28.6 to 47.6 mm)

1278(S) High-Rise Hinge



Steel strap, pivot pin, and fastener "C" ring with composite cam, follower, and top bearing

Offset (Ranges from...)
Flush to 1-5/8" (0 to 41.3 mm)

1341 Stainless Steel Double Knuckle Hinge



316 series stainless steel with stainless pin and nylon bearings

Offset
Flush (0 mm)

1345 Performer™ Adjustable Hinge



Precision die-cast aluminum flange with nylon cam, plated steel strap, reinforced high-impact ABS composite covers

Offset
Flush (0 mm), Spring Loaded

1346 Performer™ Adjustable Hinge



Precision die-cast zinc flange with nylon cam; die-cast zinc strap; and elastomer insert cover (also available in SS)

Offsets (Ranges from...)
Flush (0 mm) to 2" (50.8 mm)

1377L/S Stainless Steel Self-Closing Hinges



316 stainless steel strap and flange; satin finish

Offsets (Ranges from...)
Flush to 1-3/4" (0 to 45 mm)

1378 High-Rise Adjustable Hinge



Steel, composite, zinc, stainless steel

Offsets (Ranges from...)
Flush to 1-5/8" (0 to 41.3 mm)

1398 Heavy-Duty Edgemount Cam Rise Hinge



High pressure die-cast zinc; nylon cam and follower

Offset (Ranges from...)
2-1/2" (63.5 mm) or greater

1409 Iron Strap Hinge



Malleable iron strap, steel flange

Offset
Flush (0 mm)

HANDLES

0027C SafeGuard® Deadbolt Locking Handle



Die-cast Zamak handle housing, tongue and strike

Door Thickness

4", 5", 6" (101.6, 127, 152.4 mm)

1229S SafeGuard® Handle Series



316 Stainless steel, satin finish

Door Thickness

Custom lengths available to specification. Minimum wall thickness 2-1/4" (57 mm)

0027NL SafeGuard® Non-Locking Handle



Die-cast Zamak handle polypropylene plug

Door Thickness

4", 5", 6" (101.6, 127, 152.4 mm)

1236 SafeGuard® Heavy-Duty Lever Locking Handle



High pressure die-cast zinc

Door Thickness

4" (101.6 mm) standard

0028 SafeGuard® Performer™ Locking Handle



Heavy-duty steel tubular assembly with ABS composite covering provide optimum strength and durability. Locking strike features durable aluminum housing. Locking knob and tongue have durable ABS cover.

Door Thickness

4" (101.6 mm) standard. Other sizes available.

1238/1239 SafeGuard® Pacesetter Locking Handle



High pressure die-cast zinc

Door Thickness

4" (101.6 mm)

1228 SafeGuard® Performer™ Locking Handle



Heavy-duty steel tubular assembly with ABS composite covering provide optimum strength and durability. Locking strike features durable aluminum housing. Locking knob and tongue have durable ABS cover.

Door Thickness

4" (101.6 mm) standard. Other sizes available.

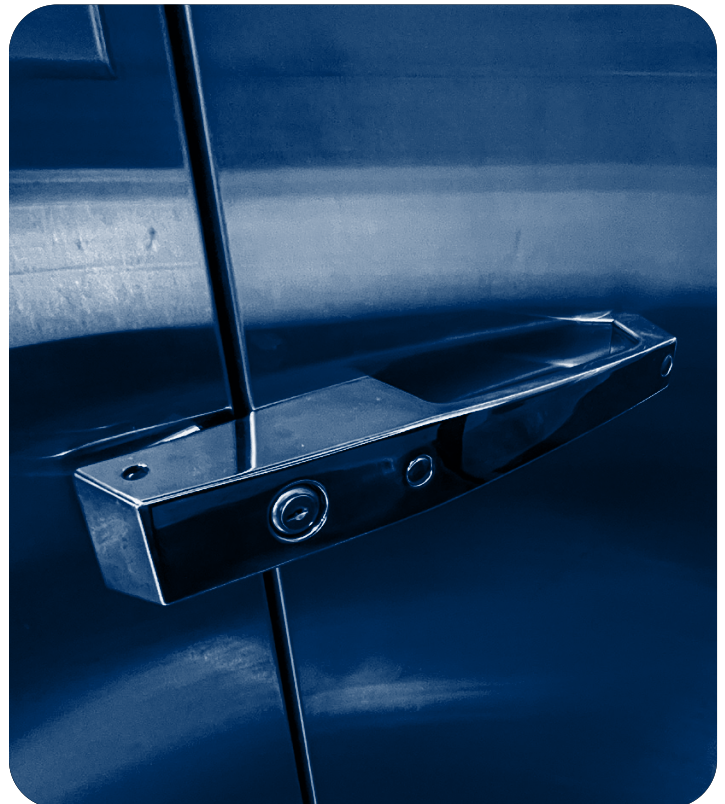
1229 SafeGuard® Handle Series



High pressure die-cast zinc

Door Thickness

Custom lengths available to specification. Minimum wall thickness 2-1/4" (57 mm)



0480 Collapsible Handle



Steel or Stainless Steel

Latches

0045, 0046, 0050, 0051, 4545, 4646, 5050, 5151

0486 Wide Recessed Handle



Kasonized zinc-plated steel rod and plate, plastic recessed housing, Safety-Glow™ plastic knob

Latches

0045, 0046, 0050, 0051, 0052, 0053, 4545, 4646, 5050, 5151, 0056, 5656, 0058, 0077, 0078, 0778

0481 Safety-Glow Inside Release



Steel rod and flange; Safety-Glow™ plastic knob

Latches

0045, 0046, 0050, 0051, 0052, 0053, 4545, 4646, 5050, 5151, 0056, 5656, 0058, 0077, 0078, 0778

0486 Bumper Guard



Cast Aluminum

0481 Stainless Steel Safety-Glow Inside Release



Stainless steel rod and flange, Safety-Glow™ plastic knob

Latches

0045, 0046, 0050, 0051, 0052, 0053, 4545, 4646, 5050, 5151, 0056, 5656, 0058, 0077, 0078, 0778

0487 Frost-Free Inside Release



Fiberglass rod and plastic flange; Safety-Glow™ plastic knob

Latches

0045, 0046, 0050, 0051, 0052, 0053, 4545, 4646, 5050, 5151, 0056, 5656, 0058, 0077, 0078, 0778

0482 Hi-Temp Inside Release



Steel rod and flange; iron knob

Latches

0045, 0046, 0050, 0051, 0052, 0053, 4545, 4646, 5050, 5151, 0056, 5656, 0058, 0077, 0078, 0778

0488 Series Walk-In Push Bar Inside Release



Anodized aluminum mounting plates and stainless steel latch cover, die-cast Zamak latch tongue, chrome plated zinc keypad housing, stainless steel inside push handle and strike

Latches

0056, 5656, 5688, 0058, 0077, 0078, 0778

0483 Paddle Handle Inside Release



Steel, Kasonized zinc-plated

Latches

0056, 5656

0485 Quarter Turn Low Conduction Inside Release



Polypropylene plate, Polycarbonate lever, foam rubber gasket, brass rod, and strike comes in die cast zinc, polished/brushed chrome, or powder coat paint

Latches

0027C, 1238, 1239

0489 Narrow Recessed Handle



Kasonized zinc-plated steel rod and plate, plastic recessed housing, Safety-Glow™ plastic knob

Latches

0045, 0046, 0050, 0051, 0052, 0053, 4545, 4646, 5050, 5151, 0056, 5656, 0058, 0077, 0078, 0778

DOOR CLOSERS

1092 Hydraulic Door Closer



Steel

Offsets (Ranges from...)
Flush to 1-5/8" (0 to 41.3 mm)

1095 Spring Action Door Closer



Steel housing and mounting plate.
Housing and hook also available
in stainless steel

Offsets (Ranges from...)
Flush to 1-5/8" (0 to 41.3 mm)

1093 Hydraulic Door Closer



Steel

Offsets (Ranges from...)
Flush to 1-5/8" (0 to 41.3 mm)

1096L/M Adjustable Door Closer



Aluminum, stainless steel hardware,
nylon roller

Offsets (Ranges from...)
1096L: Flush to 1-1/8" (0 to 28.6 mm)
1096M: Flush to 2" (0 to 50.8 mm)

1094 SureClose™ Hydraulic Door Closer

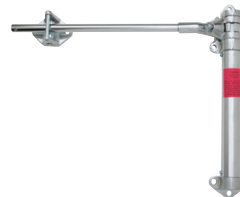


Steel

Concealed or Exposed Mounting

Offsets (Ranges from...)
Flush to 1-5/8" (0 to 41.3 mm)

1097 Spring Action Door Closer



Malleable iron with steel rod and tube

Offset (Ranges from...)
Flush to 1-5/8" (41.28 mm)

1094 Wide Hooks



12 gauge CRS (ASTM A1008)
chrome plated; 12 gauge 300 series
stainless steel, satin finish

Offsets (Ranges from...)
Flush to 1-5/8" (0 to 41.3 mm)

1098 Spring Door Closer



Steel housing and mounting plate.
Housing and hook also available in
stainless steel

Offsets (Ranges from...)
Flush to 1-5/8" (0 to 41.3 mm)

PRESSURE RELIEF PORTS

1825LE Intelli-Vent® Pressure Relief Port



Gray polycarbonate, die-cast aluminum, Gray ABS, 300 stainless steel

Wall Thickness

4" to 6" (101.6 to 152.4 mm)
3" (76.2 mm) wall spacer optional

1832DBL Low-Temperature Heated Pressure Relief Port



Aluminum, polycarbonate

Wall Thickness

4", 5", and 6" (101.6, 127, and 152.6 mm)

1826 Intelli-Vent® Modular, LED Heated Pressure Relief Port



Polycarbonate, die-cast aluminum, stainless steel

Wall Thickness

4" (101.6 mm)
Optional: 5" to 6" (127 to 152.4 mm) tube extension

1834 Small Spring Valve Unheated Pressure Relief Ports



Aluminum, polycarbonate

Wall Thickness

3", 4", and 5" (76.2, 101.6, and 127 mm)

1827 Telescoping Intelli-Vent® Heated Pressure Relief Port



Gray polycarbonate, die-cast aluminum, Gray ABS, 300 series stainless steel

Wall Thickness

3-1/2" to 5" (88.9 to 127 mm)

1836 Large Spring Valve Unheated Pressure Relief Ports



Aluminum, polycarbonate

Wall Thickness

3-1/2", 4", and 5" (88.9, 101.6, and 127 mm)

1830 Small Spring Valve Heated Pressure Relief Port



Aluminum, self-extinguishing lexan

Wall Thickness

3", 4", and 5" (76.2, 101.6, and 127 mm)

1847 Intelli-Vent® High-Flow Pressure Relief Port



Polycarbonate, die cast aluminum, Black ABS, White ABS, Gray ABS, 300 stainless steel

Wall Thickness

4" to 12" (101.6 to 304.8 mm)

1832 Large Spring Valve Heated Pressure Relief Port



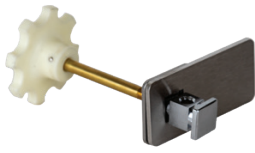
Aluminum, self-extinguishing lexan

Wall Thickness

4", 5", and 6" (101.6, 127, and 152.6 mm)

LATCHES

0036 Padlocking Hasp with Inside Release



Chrome plated die-cast zinc post;
stainless steel locking bar with brushed
finish; glow in the dark twist-off knob

Rod Length
standard 4" (101.6 mm),
custom lengths available

0049 Dutch Latch



Cast iron body and strike housing

Offsets (Ranges from...)
Flush to 1-3/8" (0 to 34.9 mm)

0045 Padlocking Brass Latch



Forged brass with steel tongue
and strike inserts

Offsets (Ranges from...)
-1/4 to 1-1/4" (-6.4 to 31.8 mm)

0050 Cylinder Locking Brass Latch



Forged brass with steel tongue and
strike inserts

Offsets (Ranges from...)
-1/4 to 1-1/4" (-6.4 to 31.8 mm)

4545 Two-Point Cylinder Locking Latch



Forged brass body, handle and
strike housing, forged steel tongue,
malleable iron strike insert, stainless
steel tube

Offsets (Ranges from...)
-1/4 to 1-1/4" (-6.4 to 31.8 mm)

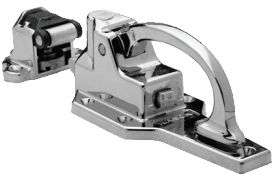
5050 Two-Point Cylinder Locking Latch



Forged brass body, handle and
strike housing, forged steel tongue,
malleable iron strike insert, stainless
steel tube

Offsets (Ranges from...)
-1/4 to 1-1/4" (-6.4 to 31.8 mm)

0046 Padlocking Latch



High pressure die-cast zinc body,
forged brass handle and strike housing

Offsets (Ranges from...)
Flush to 1-1/4" (0 to 31.8 mm)

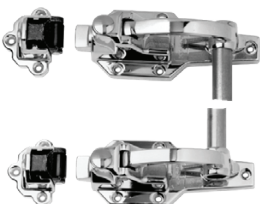
0051 Cylinder Locking Latch



Polished chrome

Offsets (Ranges from...)
Flush to 1-1/4" (0 to 31.8 mm)

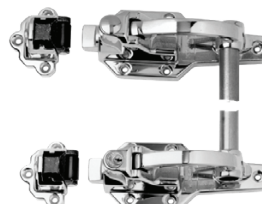
4646 Two-Point Padlocking Latch



High pressure die-cast zinc body,
forged brass handle and strike
housing, forged steel tongue,
malleable iron strike insert, stainless
steel tube

Offsets (Ranges from...)
1/4 to 1-1/4" (6.4 to 31.8 mm)

5151 Cylinder Locking Latch



High pressure die-cast zinc body,
forged brass handle and strike
housing, forged steel tongue,
malleable iron strike insert, stainless
steel tube

Offsets (Ranges from...)
-1/4 to 1-1/4" (-6.4 to 31.8 mm)

0052 Iron Padlocking Latch



Cast iron body and strike
Offsets (Ranges from...)
 -1/8 to 1-3/8" (-3.2 to 34.9 mm)

0053 Iron Padlocking Latch



Cast iron body and strike housing,
 malleable iron handle
Offsets (Ranges from...)
 -1/4 to 1-5/8" (-6.4 to 41.3 mm)

0055 SafeGuard® Latch



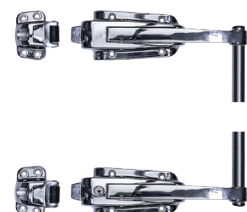
High pressure die-cast zinc body
 and strike housing, stainless steel
 handle, cold rolled steel inside
 release paddle assembly
Offsets (Ranges from...)
 Flush to 1-7/8" (0 to 47.6 mm)

0056 SafeGuard® Latch



High pressure die-cast zinc body
 and strike housing, 300 series
 stainless steel handle
Offsets (Ranges from...)
 -1/8 to 4" (-3.2 to 101.6 mm)

5656 Two-Point SafeGuard® Latch



High pressure die-cast zinc body
 and strike housing, 300 series
 stainless steel handle
Offsets (Ranges from...)
 1/4 to 1-1/2" (6.4 to 38.1 mm)

5688 SafeGuard® Two-Point Latch w/ 0488 Vertical Push Bar ISR



High pressure die-cast Zamak 3
 body and strike housing,
 300 series stainless steel handle
Offsets (Ranges from...)
 -1/8 to 1-1/2" (-3.2 to 38.1 mm)

0057 SecureGuard™ Locking Latch w/ Keyed or Keyless ISR



die-cast Zamak latch tongue, die-
 cast Zamak outside pull handle with
 polished chrome finish, stainless
 steel inside push handle and strike,
 nonconductive plastic couplings
Offsets (Ranges from...)
 Flush to 1-1/4" (0 to 31.6 mm)

0057 SecureGuard™ e-Lock High Security Latch



Aluminum mounting plates, stainless
 steel latch cover, die-cast Zamak
 latch tongue, die-cast Zamak outside
 pull handle with polished chrome
 finish, stainless steel inside push
 handle and strike, die-cast zinc
 powder coated e-Lock body,
 non-conductive plastic coupling
Offsets (Ranges from...)
 Flush to 1-1/4" (0 to 31.6 mm)

0057 SecureGuard™ e-Lock Plus High Security Latch



Anodized aluminum mounting plates
 and stainless steel latch cover,
 die-cast Zamak latch tongue,
 chrome plated zinc keypad housing,
 stainless steel inside push handle
 and strike

0057E SecureGuard™ Latch with Electronic Flush Strike



Steel base plate, Optional 300
 series stainless steel or powder
 coated steel top cover, stainless steel
 electric strike assa abloy 9600,
 gray ABS, Zamak #3
Temperature Range
 -20°F to 120°F (-29°C to 49°C)

LATCHES

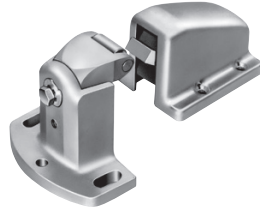
0058 SafeGuard® Radial Latch



High pressure die-cast zinc,
stainless black plate

Offsets (Ranges from...)
-1/8 to 2-1/2" (-3.2 to 63.5 mm)

0188 Two-Point Latch



Steel body, aluminum cover and
strike, high pressure die-cast zinc
pull handles

Offsets (Ranges from...)
-1/8 to 1-3/8" (-3.2 to 34.9 mm)

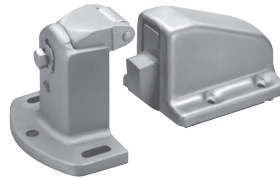
0058E SafeGuard® Security Latch with Electronic Flush Strike



Steel base plate, optional 300 series
stainless steel or powder coated steel
latch cover, Gray ABS, zinc die-cast

Temperature Range
-31°F to 150°F (-35°C to 66°C)

0188X Explosion Venting Latch



Steel body, aluminum cover and strike

Offsets (Ranges from...)
-1/8 to 1-3/8" (-3.2 to 34.9 mm)

0059 SafeGuard® Roller Strike



High pressure die-cast zinc

Offsets (Ranges from...)
-1/8 to 2-1/2" (-3.2 to 63.5 mm)

0189 Two-Point Latch



Steel body, aluminum cover strike,
aluminum outside and inside
handles; malleable iron offset block

Offsets (Ranges from...)
-1/8 to 1-3/8" (-3.2 to 34.9 mm)

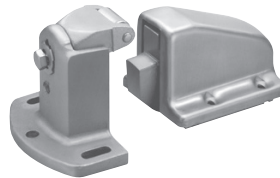
0077 SafeGuard® Rolling Radial Latch



High pressure die-cast zinc,
stainless steel back plate

Offsets (Ranges from...)
-1/8 to 2-1/2" (-3.2 to 63.5 mm)

0189X Explosion Venting Latch



Steel body, aluminum cover and strike

Offsets (Ranges from...)
-1/8 to 2-1/2" (-3.2 to 63.5 mm)

0078 SafeGuard® Radial Latch



High pressure die-cast zinc

Offsets (Ranges from...)
-1/8 to 4" (-3.2 to 101.6 mm)

0199 Two-Point Latch



Aluminum

Offsets (Ranges from...)
4-1/2" (114.3 mm) or higher

0778 Stainless Steel SafeGuard® Radial Tongue Latch and Strike



Satin Finish, #316 stainless steel body and strike housing

Offsets (Ranges from...)
-1/8 to 2-1/2" (-3.2 to 63.5 mm)

0779 Stainless Steel Spring Roller Strike



Nylon roller standard, stainless steel and brass roller optional

Offsets (Ranges from...)
1/8 to 1-5/8" (3.2 to 41.3 mm)

0078S SafeGuard® Handle



High pressure die-cast zinc

Three available finishes - polished chrome, brushed chrome, or silver powder coat

0944 Locking Deadbolt Latch



Die-cast Zamak exterior bolt housing and strike; 1" solid metal throw bolt; glass-filled, composite interior plate and thumb-turn; plastic thru-door shaft

Offset
Flush

0948C Cylinder Locking Inside Release System



Lock: Die-cast zinc/polished chrome

Inside Release: Metal hub and flange, stainless steel arm and bolt, nylon bushing and shaft, polypropylene strike

Rod Length
Standard for 4" (101.6 mm) door thickness. Custom lengths available



PANEL FASTENERS

Panelock™ 1168RBP Locking Point



Steel housing and hook,
high pressure die-cast cam
Use with 1196L adapter

Panelock™ 1188RBP Locking Point



Steel housing and hook,
high pressure die-cast cam
Use with 1188L adapter

Panelock™ 1168RBP Locking Point



Steel housing and hook, high
pressure die-cast cam
Use with 1196L adapter

Panelock™ 1188RP Wide Mouth Strike



Steel housing and pin
Use with 1188S adapter

Panelock™ 1164-10 Tunnel Cap



Provides a foam-free wrench path
for standard Kason locking points
Dimensions
1-1/4" (31.6 mm)

Panelock™ 1188RT Tunnel Locking Point



Steel housing and hook,
high pressure die-cast cam
Use with 1188L adapter

Panelock™ 1168RP Strike



Steel housing and pin
Use with 1169S adapter

Panelock™ 1189P Wide Mouth Strike



Steel housing and pin
Use with 1188S adapter

Panelock™ 1169P Strike



Steel housing and pin
Use with 1169S adapter

Panelock™ 1173 Compact Locking Point



Steel housing and hook, high
pressure die-cast cam
Use with 1169L adapter

Panelock™ 1178RP Wide Mouth Strike



Steel housing and pin
Use with 1178S adapter

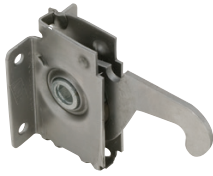
Panelock™ 1173 Strike



Steel housing and pin
Use with 1169S adapter

PANEL FASTENERS

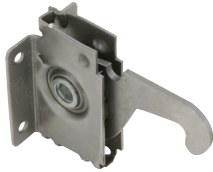
Panelock™ 1156A Locking Point



Steel housing and hook,
high pressure die-cast cam

Typical application for tongue and
groove rails where fasteners are nailed
or stapled to rails.

Panelock™ 1156B Locking Point



Steel housing and hook,
high pressure die-cast cam

Same as No. 1156A, except with
3/8" (9.5 mm) additional hook
reach; for use with butt joint panels
or thick rails.

Panelock™ 1153A Barbed Locking Point



Steel housing and hook,
high pressure die-cast cam

1156 locking points available in all-
stainless steel construction for high
corrosion or specified applications.

Panelock™ 1153B Barbed Locking Point



Steel housing and hook,
high pressure die-cast cam

Functionally interchangeable with
No. 1156B, with added feature
of self-securing barbs.

Panelock™ 1155 Strike



Steel housing and pin

Flange-mounted enclosed strikes
eliminate the need to drill a hole for
pins.

Panelock™ 1154 Strike



Steel housing and pin

Functionally interchangeable with
No. 1155 strike, with added feature
of self-securing barbs.

Panelock™ 1172/1174 Panel Fasteners



Housing: High impact,
black thermoplastic

Hook & Pin: Steel

Panelock™ 1151 Plastic Block Fastener



Housing: High impact,
white thermoplastic

Hook & Pin: Steel

Panelock™ 1138 Finish Cap



Polyethylene

Size
3/4" (19.0 mm) diameter

Panelock™ 1147 Finish Cap



Brass

Size
1/2" (12.7 mm) diameter

Panelock™ 1145 Hex Wrench



Hardened Steel

Size
6" x 6" (152.4 x 152.4 mm)

Part No.	Description	Qty./ Carton	Wgt./Carton
71169L00004	Panelock™ Adapter	200	24 lb (11 kg)
71169S00004	Panelock™ Adapter	200	18 lb (8 kg)
71178S00004	Panelock™ Adapter	200	28 lb (13 kg)
71188L00004	Panelock™ Adapter	200	31 lb (14 kg)
71188S00004	Panelock™ Adapter	200	36 lb (16 kg)

LIGHTING

1802 LED Walk-In Cooler and Freezer Lamp



Designed to reduce electrical usage by 85%

Temperature Rating

-20°F to 90°F (-4°C to 32°C)

1802LG with 1802-2 Wire Guard



Cast aluminum box, housing and plugs; chrome-plated steel wire guard

Temperature Rating

-40°F to 104°F (-40°C to 40°C)

1802 NL Safety



PC, Aluminum, Rubber, 6" wire

Temperature Rating

-40°F to 104°F (-40°C to 40°C)

1803 LED Walk-In Cooler and Freezer Fixture



High impact Lexan globe with anti-glare technology

Temperature Rating

-20°F to 90°F (-4°C to 32°C)

1806 LED Walk-In Cooler and Freezer Fixture



High impact Lexan globe with anti-glare technology

Temperature Rating

-20°F to 90°F (-4°C to 32°C)

1803LG Vaporproof Fixture with Lexan Globe



Cast aluminum box, housing, and plugs

Temperature Rating

-40°F to 104°F (-40°C to 40°C)

1804LG Vaporproof Fixture with Coated Globe



Cast aluminum box, housing, and plugs

Temperature Rating

-40°F to 104°F (-40°C to 40°C)

1806 Series Vaporproof Compact Fluorescent Light Fixture



Die-cast aluminum box, housing and plugs. Clear polycarbonate or coated glass globe

Temperature Rating

Supply lead 140°F (60°C) minimum. Instant start at -20°F (-29°C), three minutes to full luminescence

1807L Series Walk-In Cooler/Freezer LED Fixtures



Die-cast aluminum box, polycarbonate lens

Temperature Rating

-20°F to 77°F (-29°C to 25°C)

1808 LED Fixture



Lexan lens, aluminum housing

Temperature Rating

-40°F to 104°F (-40°C to 40°C)

1808NMA/1808FMA LED Fixtures



Lexan lens, aluminum housing

Temperature Rating

-40°F to 77°F (-40°C to 25°C)

1809 LED Fixture



Polycarbonate lens, aluminum housing

Temperature Rating

-40°F to 77°F (-40°C to 25°C)

1809 LED Fixture



Polycarbonate lens, aluminum housing

Temperature Rating
-40°F to 77°F (-40°C to 25°C)

1810LCT400 LED Fixture Light



Diffuser: Frosted UL approved UL94-HB rated, PC
Housing: Gray UL approved UL94-5VA rated, PC
LED tray: White painted steel

Temperature Rating
-40°F to 104°F (-40°C to 40°C)

1809DC Surface Mount PoE LED Fixture (Power Over Ethernet)



Polycarbonate lens, aluminum housing

Temperature Rating
-40°F to 77°F (-40°C to 25°C)

1820 LED High Bay Fixture



Polycarbonate lens, Die cast aluminum housing

Temperature Rating
-20°F to 104°F (-29°C to 40°C)

1810LC4000-B LED Fixture with Battery Backup



Plastic/polycarbonate latches, High-impact polycarbonate housing

Temperature Rating
90-minute battery backup for walk-ins down to 32°F (0°C)

1901A Series Motion Sensor



Polycarbonate

Temperature Rating
-20°F to 160°F (-28.9°C to 60°F)



MISCELLANEOUS

100WG Sweeper Gasket



Sturdy aluminum extrusion

Dimensions

36" / 48" (914.4 / 1219.2 mm)

Safety-Glow Push Panel



Printed on waterproof,
sanitary polypropylene

1230 Walk-In Door Foot Treadle



Die cast aluminum, 304 stainless
steel, nylon

Temperature Rating

-40°F to 150°F (-40°C to 66°C)

1230-8 Foot Treadle with Retrofit Kit



Die cast aluminum, 304 stainless
steel, nylon

Temperature Rating

-40°F to 150°F (-40°C to 66°C)

